

# Cisco Catalyst 9200 Series Switches

---

# Contents

Introduction	4
Product overview	4
<b>Product highlights</b>	<b>4</b>
Features and benefits platform details	5
<b>Switch models and configurations</b>	<b>5</b>
<b>Network modules</b>	<b>8</b>
<b>Platform resiliency</b>	<b>9</b>
Performance and scalability	13
<b>Performance specifications</b>	<b>13</b>
Bandwidth specifications	15
Software	16
<b>Platform software benefits</b>	<b>16</b>
Secure Segmentation with SD-Access	17
<b>Software-Defined Access</b>	<b>17</b>
<b>Smart operation</b>	<b>19</b>
Licensing	20
<b>Introduction to Smart Licensing</b>	<b>20</b>
<b>Network licensing</b>	<b>21</b>
<b>Cisco Catalyst Software licensing</b>	<b>22</b>
<b>Managing licenses with Smart Accounts</b>	<b>23</b>
Specifications	23
<b>Dimensions, weight, acoustic, mean time between failures</b>	<b>23</b>
<b>Connectors</b>	<b>28</b>
<b>Management and standards support</b>	<b>29</b>
<b>Power supply specifications</b>	<b>31</b>
<b>Power consumption of Standalone 9200 Series switches</b>	<b>34</b>
<b>Safety and compliance</b>	<b>38</b>

---

Ordering	39
<b>Ordering information</b>	<b>39</b>
<b>Switch Models</b>	<b>39</b>
<b>Software licenses</b>	<b>42</b>
<b>Stacking Cables</b>	<b>47</b>
<b>Power supplies</b>	<b>48</b>
<b>Mounting Accessories</b>	<b>49</b>
Warranty	50
<b>Cisco enhanced limited lifetime hardware warranty</b>	<b>50</b>
<b>Cisco services for next-generation Cisco Catalyst switches</b>	<b>51</b>
Optics online reference	51
Product sustainability	51
Cisco Services	53
CSR/Social Responsibility	53
Cisco Capital	53
Document history	54

---

## Introduction

### Extend intent-based networking everywhere

Cisco® Catalyst® 9200 Series switches extend the power of intent-based networking and Catalyst 9000 hardware and software innovation to a broader set of deployments. With its family pedigree, **Catalyst 9200 Series switches offer simplicity without compromise – it is secure, always on, and IT simplified.**

As foundational building blocks for the Cisco Networking Cloud, Catalyst 9200 Series switches help customers simplify complexity, optimize IT, and reduce operational costs by leveraging intelligence, automation and human expertise that no other vendor can deliver regardless of where you are in the intent-based networking journey.

Catalyst 9200 Series switches provide security features that protect the integrity of the hardware as well as the software and all data that flows through the switch. It provides resiliency that keeps your business up and running seamlessly. Combine that with open APIs of Cisco IOS XE® and programmability of the UADP ASIC technology, Catalyst 9200 Series switches give you what you need now with investment protection on future innovations.

With full PoE+ capability, power and fan redundancy, stacking bandwidth up to 160 Gbps, modular uplinks, Layer 3 feature support, and cold patching, Catalyst 9200 Series switches are the industry's unparalleled solution with differentiated resiliency and progressive architecture for cost-effective branch-office access. Catalyst 9200 Series switches also provide operational choice of CLI, Cisco Catalyst Center (formerly Cisco DNA Center) on-premises management, or cloud monitoring for Catalyst on Meraki dashboard.

## Product overview

### Product highlights

- Full Power over Ethernet Plus (PoE+) capability for up to 48 ports for C9200. Power over Ethernet Plus (PoE+) capability for up to 12 ports, IEEE 802.3bt class 6 and Cisco UPOE capability for up to 8 ports for C9200CX.
- Resiliency with **Field-Replaceable Units (FRU)** and redundant power supply, fans, and modular uplinks for C9200 models. C9200CX models are fanless and are powered by internal fixed power supply or optional power adapters, when not powered by upstream IEEE 802.3bt class 6 60W PSE.
- Flexible power source options from line voltage AC, low voltage DC to High Voltage DC (HVDC) in C9200CX models provide the choices for customers to migrate to efficient DC micro grid powered by renewable energy sources for a sustainable future.
- Flexible downlink options with data, PoE+, UPOE, UPOE with mGig for Wi-Fi 6/6E.
- Operational efficiency with optional **backplane stacking**, supporting stacking bandwidth up to 160 Gbps.
- **UADP 2.0** Mini with integrated CPU offers customers optimized scale with better cost structure.
- Enhanced security with AES-128 MACsec encryption on C9200 and AES-256 MACsec encryption for C9200CX models, policy-based segmentation, and trustworthy solutions for the whole Catalyst 9200 Series.
- **Layer 3** capabilities, including OSPF, EIGRP, ISIS, RIP, and routed access. C9200CX also supports basic BGP from IOS-XE 17.13.1 for more versatile deployments.

- Cisco **Software-Defined Access** (SD-Access).
  - Simplified operations and deployment with policy-based automation from edge to cloud managed with **Cisco Identity Services Engine** (ISE).
  - Network assurance and improved resolution time through Cisco Catalyst Center.
- **Plug and Play** (PnP) enabled: A simple, secure, unified, and integrated offering to ease new branch or campus device rollouts or updates to an existing network.
- **Cisco IOS XE**: A Common Licensing based operating system for the enterprise Cisco Catalyst 9000 product family with support for model-driven programmability and streaming telemetry.
- ASIC with programmable pipeline and micro-engine capabilities, along with template-based, configurable allocation of Layer 2 and Layer 3 forwarding, Access Control Lists (ACLs), and Quality of Service (QoS) entries.
- **Precision Time Protocol** (PTP; IEEE 1588v2) supported on C9200CX models provides accurate clock synchronization with sub-microsecond accuracy making it suitable for distribution and synchronization of time and frequency over network.
- Cloud monitoring for Catalyst on Meraki dashboard.
- ENERGY STAR® certified models (C9200L models).

Features and benefits platform details

Switch models and configurations

Table 1. Catalyst 9200 Series models and configurations

Models	FRU Power Supply	FRU Fans	Modular Uplinks	Stacking Bandwidth Support	SD-Access Support <sup>1</sup>
Modular uplink models (C9200 Enhanced VN SKUs)	Yes	Yes	Yes	160 Gbps	Yes (32 Virtual Networks) <sup>2</sup>
Modular uplink models (C9200 SKUs)	Yes	Yes	Yes	160 Gbps	Yes (4 Virtual Networks)
Fixed uplink Models (C9200L SKUs)	Yes	No	No	80 Gbps	Limited (1 Virtual Network)
Compact Models (C9200CX SKUs)	Fixed internal power supply	Fanless	No	No	Yes (16 Virtual Networks)

<sup>1</sup> Catalyst 9200 standalone and stack can support 25 Access Tunnels for fabric enabled APs.

Catalyst 9200CX can support 25 Access Tunnels for fabric enabled APs with IOS-XE 17.9.5 and above.

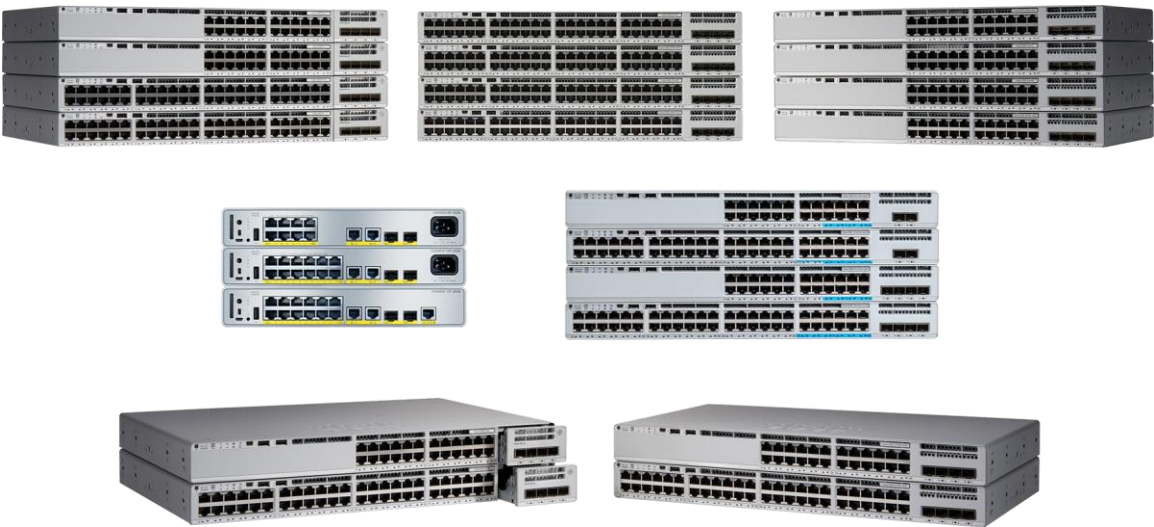
Catalyst 9200L is not supported as Fabric Edge for SD-Access Wireless.

Catalyst 9200, 9200L and 9200CX do not support SD-Access Embedded Wireless Controller.

**Note:** Over the top fabric deployments eventually migrating to fabric wireless architecture should consider this limit during design/deployment.

<sup>2</sup> C9200-24PB-A, C9200-48PB-A SKUs supports 32 Virtual Networks. These SKUs cannot be stacked with C9200 SKUs with 4VNs.

The Cisco Catalyst 9200 Series is made up of modular (C9200), fixed (C9200L) and compact (C9200CX) switch models.



**Figure 1.**  
Cisco Catalyst 9200 Series switches

**Table 2.** Cisco Catalyst 9200 Series Switch configurations

Switch model	Downlinks total 10/100/1000 or PoE+ copper ports	Uplink configuration	Default primary power supply	Fans
Modular uplink models				
C9200-24T	24 ports data	Modular uplink options	PWR-C6-125WAC	FRU redundant
C9200-24P	24 ports full PoE+	Modular uplink options	PWR-C6-600WAC	FRU redundant
C9200-24PB	24 ports full PoE+	Modular uplink options	PWR-C6-600WAC	FRU redundant
C9200-24PXG	24 ports full PoE+ (8 mGig ports up to 10G, 16 ports up to 1G)	Modular uplink options	PWR-C6-600WAC	FRU redundant
C9200-48T	48 ports data	Modular uplink options	PWR-C6-125WAC	FRU redundant
C9200-48P	48 ports full PoE+	Modular uplink options	PWR-C6-1KWAC	FRU redundant
C9200-48PL	48 Ports partial PoE+	Modular uplink options	PWR-C6-600WAC	FRU redundant
C9200-48PB	48 ports full PoE+	Modular uplink options	PWR-C6-1KWAC	FRU redundant
C9200-48PXG	48 ports full PoE+ (8 mGig ports up to 10G, 40 ports up to 1G)	Modular uplink options	PWR-C6-1KWAC	FRU redundant

Switch model	Downlinks total 10/100/1000 or PoE+ copper ports	Uplink configuration	Default primary power supply	Fans
<b>Fixed uplink models</b>				
<b>C9200L-24T-4G</b>	24 ports data	4x 1G fixed uplinks	PWR-C5-125WAC	Fixed redundant
<b>C9200L-24P-4G</b>	24 ports full PoE+	4x 1G fixed uplinks	PWR-C5-600WAC	Fixed redundant
<b>C9200L-48T-4G</b>	48 ports data	4x 1G fixed uplinks	PWR-C5-125WAC	Fixed redundant
<b>C9200L-48P-4G</b>	48 ports full POE+	4x 1G fixed uplinks	PWR-C5-1KWAC	Fixed redundant
<b>C9200L-48PL-4G</b>	48 Ports partial PoE+	4X 1G Fixed uplinks	PWR-C5-600WAC	Fixed redundant
<b>C9200L-24T-4X</b>	24 ports data	4x 1/10G fixed uplinks	PWR-C5-125WAC	Fixed redundant
<b>C9200L-24P-4X</b>	24 ports full PoE+	4x 1/10G fixed uplinks	PWR-C5-600WAC	Fixed redundant
<b>C9200L-48T-4X</b>	48 ports data	4x 1/10G fixed uplinks	PWR-C5-125WAC	Fixed redundant
<b>C9200L-48P-4X</b>	48 ports full PoE+ ENERGY STAR® certified	4x 1/10G fixed uplinks	PWR-C5-1KWAC	Fixed redundant
<b>C9200L-48PL-4X</b>	48 Port partial PoE+	4X 1/10G Fixed uplinks	PWR-C5-600WAC	Fixed redundant
<b>C9200L-24PXG-4X</b>	24 ports full PoE+ (8 mGig ports up to 10G, 16 ports up to 1G)	4x 1/10G fixed uplinks	PWR-C5-600WAC	Fixed redundant
<b>C9200L-48PXG-4X</b>	48 ports full POE+ (12 mGig ports up to 10G, 36 ports up to 1G)	4x 1/10G fixed uplinks	PWR-C5-1KWAC	Fixed redundant
<b>C9200L-24PXG-2Y</b>	24 ports full PoE+ (8 mGig ports up to 10G, 16 ports up to 1G)	2x 1/10/25G fixed uplinks	PWR-C5-600WAC	Fixed redundant
<b>C9200L-48PXG-2Y</b>	48 ports full POE+ (8 mGig ports up to 10G, 40 ports up to 1G)	2x 1/10/25G fixed uplinks	PWR-C5-1KWAC	Fixed redundant
<b>Compact models</b>				
<b>C9200CX-12T-2X2G</b>	12 ports data	2x 1G copper, 1x 1G CU PD 802.3bt Class 6, 2x 10G SFP+ fixed uplinks	Powered by 802.3bt class 6 PoE  Optional auxiliary 80W AC or DC power adaptor	Fanless
<b>C9200CX-12P-2X2G</b>	12 ports PoE+	2x 1G copper, 2x 10G SFP+ fixed uplinks	315W AC internal	Fanless
<b>C9200CX-8P-2X2G</b>	8 ports full PoE+	2x 1G copper, 2x 10G SFP+ fixed uplinks	315W AC internal	Fanless
<b>C9200CX-8UXG-2X</b>	8 ports UPOE (4 mGig ports up to 10G, 4 ports up to 1G)	2x 10G SFP+ fixed uplinks	315W AC internal	Fanless

Switch model	Downlinks total 10/100/1000 or PoE+ copper ports	Uplink configuration	Default primary power supply	Fans
<b>C9200CX-12P-2XGH</b>	12 ports PoE+	2x 1G copper, 2x 10G SFP+ fixed uplinks	315W HVDC/AC internal	Fanless
<b>C9200CX-8P-2XGH</b>	8 ports full PoE+	2x 1G copper, 2x 10G SFP+ fixed uplinks	315W HVDC/AC internal	Fanless
<b>C9200CX-8UXG-2XH</b>	8 ports UPOE (4 mGig ports up to 10G, 4 ports up to 1G)	2x 10G SFP+ fixed uplinks	315W HVDC/AC internal	Fanless

## Network modules

Cisco Catalyst 9200 Series switches come with modular or fixed uplinks as indicated in Table 1. With modular SKUs, the field-replaceable network modules provide infrastructure investment protection by allowing a nondisruptive migration from 1G to 10G and beyond. When you purchase the switch, you can choose from the network modules described in Table 3.



**Figure 2.**  
Cisco Catalyst 9200 Series Switch network modules

**Table 3.** Network module part numbers and descriptions

Network module	Description
<b>C9200-NM-2Y<sup>1</sup></b>	2 x 25G network module
<b>C9200-NM-2Q<sup>1</sup></b>	2 x 40G network module
<b>C9200-NM-4G<sup>2</sup></b>	4x 1G network module
<b>C9200-NM-4X</b>	4x 1G/10G network module
<b>C9200-NM-BLANK</b>	No network module

<sup>1</sup> Supported only on C9200-24PXG, C9200-48PXG

<sup>2</sup> Not supported on C9200-24PXG, C9200-48PXG



---

For additional details, please read our FAQ:

<https://www.cisco.com/c/dam/en/us/products/collateral/switches/catalyst-9000/nb-09-cat-9k-faq-cte-en.pdf>.

## Platform resiliency

### Power supplies

Cisco Catalyst 9200 Series switches support dual field-replaceable power supplies (Figure 3). Each switch ships with one default power supply, and a second identical power supply can be purchased with the initial order or can be added later. The second power supply can provide redundancy or additional power to PoE+ ports as needed.

Cisco Catalyst 9200CX Series HVDC models can be powered by high voltage DC as well as line voltage AC with its default power supply. These switches support high efficiency and low energy consumption when connected to DC micro grid by avoiding multiple AC-DC conversions. The compatibility with AC also provides flexibility and investment protection for moving to DC power in the future.

### Intelligent PoE+

- **IEEE 802.3at PoE+ (up to 30W per port)** is supported on Cisco Catalyst 9200 Series switches to lower the total cost of ownership for deployments that incorporate Cisco IP phones, Cisco Aironet wireless access points, or other standards-compliant PoE+ end devices. PoE+ removes the need to supply wall power to PoE-enabled devices and eliminates the cost of adding electrical cabling and circuits that would otherwise be necessary in IP phone and WLAN deployments. With Cisco Catalyst 9200 Series switches, PoE+ power allocation is dynamic, and power mapping scales up to a maximum of 1440W of PoE+ power.
- **IEEE 802.3bt Class 6 and Cisco UPOE (up to 60W per port)** is supported on Catalyst 9200CX Series mGig model. This facilitates delivery of network power to devices requiring higher power.
- **PoE Powered Device (PD)** - Catalyst 9200CX-12T-2X2G can be powered through the uplink with IEEE 802.3bt class 6 or UPOE+ power from upstream switch.
- **Perpetual PoE** is supported on Cisco Catalyst 9200 Series switches, and maintains the PoE+ power during a switch reload. This is important for critical endpoints such as medical devices and for Internet of Things (IoT) endpoints such as PoE-powered lights, so that there is no disruption during a switch reboot.
- **Fast PoE:** When power is restored to a switch, Fast PoE starts delivering power to endpoints without waiting for the operating system to fully load, thereby speeding up the time for the endpoint to start up.



**Figure 3.**  
Cisco Catalyst 9200 Series Switch dual redundant power supplies

Table 4 lists the PoE power availability for each model.

**Table 4.** PoE+ Power with primary and secondary power supplies

Model	Primary power supply	Available PoE power with single primary power supply only <sup>1</sup>	Optional secondary power supply	Available PoE power with additional secondary power supply <sup>1</sup>
<b>C9200-24P</b>	PWR-C6-600WAC	370W	PWR-C6-600WAC	740W
	PWR-C6-715WDC= <sup>2</sup>	485W	PWR-C6-715WDC=	740W
<b>C9200-24PB</b>	PWR-C6-600WAC	370W	PWR-C6-600WAC	740W
	PWR-C6-715WDC=	485W	PWR-C6-715WDC=	740W
<b>C9200-24PXG</b>	PWR-C6-600WAC	370W	PWR-C6-600WAC	740W
	PWR-C6-715WDC=	485W	PWR-C6-715WDC=	740W
<b>C9200-48P</b>	PWR-C6-1KWAC	740W	PWR-C6-1KWAC	1440W
	PWR-C6-715WDC=	485W	PWR-C6-715WDC=	970W
<b>C9200-48PL</b>	PWR-C6-600WAC	370W	PWR-C6-600WAC	740W
	PWR-C6-715WDC=	485W	PWR-C6-715WDC=	970W
<b>C9200-48PB</b>	PWR-C6-1KWAC	740W	PWR-C6-1KWAC	1440W
	PWR-C6-715WDC=	485W	PWR-C6-715WDC=	970W

Model	Primary power supply	Available PoE power with single primary power supply only <sup>1</sup>	Optional secondary power supply	Available PoE power with additional secondary power supply <sup>1</sup>
<b>C9200-48PXG</b>	PWR-C6-1KWAC	740W	PWR-C6-1KWAC	1440W
	PWR-C6-715WDC=	485W	PWR-C6-715WDC=	970W
<b>C9200L-24P-4G</b>	PWR-C5-600WAC	370W	PWR-C5-600WAC	740W
	PWR-C5-715WDC= <sup>2</sup>	485W	PWR-C5-715WDC=	740W
<b>C9200L-24P-4X</b>	PWR-C5-600WAC	370W	PWR-C5-600WAC	740W
	PWR-C5-715WDC=	485W	PWR-C5-715WDC=	740W
<b>C9200L-48P-4G</b>	PWR-C5-1KWAC	740W	PWR-C5-1KWAC	1440W
	PWR-C5-715WDC=	485W	PWR-C5-715WDC=	970W
<b>C9200L-48PL-4G</b>	PWR-C5-600WAC	370W	PWR-C5-600WAC	740W
	PWR-C5-715WDC=	485W	PWR-C5-715WDC=	970W
<b>C9200L-48P-4X<sup>3</sup></b>	PWR-C5-1KWAC	740W	PWR-C5-1KWAC	1440W
	PWR-C5-715WDC=	485W	PWR-C5-715WDC=	970W
<b>C9200L-48PL-4X</b>	PWR-C5-600WAC	370W	PWR-C5-600WAC	740W
	PWR-C5-715WDC=	485W	PWR-C5-715WDC=	970W
<b>C9200L-24PXG-4X</b>	PWR-C5-600WAC	370W	PWR-C5-600WAC	740W
	PWR-C5-715WDC=	485W	PWR-C5-715WDC=	740W
<b>C9200L-48PXG-4X</b>	PWR-C5-1KWAC	740W	PWR-C5-1KWAC	1440W
	PWR-C5-715WDC=	485W	PWR-C5-715WDC=	970W
<b>C9200L-24PXG-2Y</b>	PWR-C5-600WAC	370W	PWR-C5-600WAC	740W
	PWR-C5-715WDC=	485W	PWR-C5-715WDC=	740W
<b>C9200L-48PXG-2Y</b>	PWR-C5-1KWAC	740W	PWR-C5-1KWAC	1440W
	PWR-C5-715WDC=	485W	PWR-C5-715WDC=	970W
<b>C9200CX-12P-2X2G</b>	315W AC Internal	240W	N/A	N/A
<b>C9200CX-8P-2X2G</b>	315W AC internal	240W	N/A	N/A
<b>C9200CX-8UXG-2X</b>	315W AC internal	240W	N/A	N/A
<b>C9200CX-12P-2XGH</b>	315W HVDC/AC internal	240W	N/A	N/A

Model	Primary power supply	Available PoE power with single primary power supply only <sup>1</sup>	Optional secondary power supply	Available PoE power with additional secondary power supply <sup>1</sup>
<b>C9200CX-8P-2XGH</b>	315W HVDC/AC internal	240W	N/A	N/A
<b>C9200CX-8UXG-2XH</b>	315W HVDC/AC internal	240W	N/A	N/A

<sup>1</sup> Limited by port number and port rating (for example, 24 PoE+ 30W ports = 720W)

<sup>2</sup> PWR-C5-715WDC= and PWR-C6-715WDC= are available to order as spare only and supported in IOS-XE 17.8.1 and above

PWR-C5-715WDC= and PWR-C6-715WDC= are only supported on C9200L and C9200 PoE models.

PWR-C5-715WDC= and PWR-C6-715WDC= can mix with AC power supplies as primary/secondary on the same device for C9200L and C9200.

<sup>3</sup> ENERGY STAR® certified model

## Stacking

Cisco Catalyst 9200 Series switch models are designed for stacking switches as a single virtual switch, enabling customers to have a single management plane and control plane for up to 384 access ports.

Table 5 lists the supported stacking options.

**Table 5.** Supported stacking options

Model	Stacking support	Stacking bandwidth support	Stacking hardware	Number of members	Supported stack members
<b>Modular models (C9200 SKUs)</b>	StackWise-160	160 Gbps	C9200-STACK-KIT	8	Other C9200 models with same license level
<b>Fixed models (C9200L SKUs)</b>	StackWise-80	80 Gbps	C9200L-STACK-KIT	8	Other C9200L models with same license level

Mixed stacking is **not supported**. You cannot stack fixed (C9200L SKUs) with modular (C9200 SKUs) models, or other Catalyst switches, e.g. Cisco Catalyst 2960-X and 2960-XR Series. Stacking not available on C9200CX switches.

The optional StackWise-160 and StackWise-80 kits consist of two adapters and a stacking cable. The default stacking cable is 0.5 m, but options of 1 m and 3 m are also available.

Table 6 lists the stacking accessories.

**Table 6.** Stacking accessories

Model	Description
<b>C9200-STACK-KIT</b>	Stack kit for C9200 SKUs only: Two data stack adapters and one data stack cable
<b>C9200L-STACK-KIT</b>	Stack kit for C9200L SKUs only: Two data stack adapters and one data stack cable
<b>STACK-T4-50CM</b>	Data stack 50 cm cable (default cable with Stack Kit)

Model	Description
STACK-T4-1M	Data stack 1 m cable
STACK T4-3M	Data stack 3 m cable



**Figure 4.**  
Cisco Catalyst 9200 Series Switch stacked units

### Fan

Cisco Catalyst 9200 Series switches also come with dual fans and support redundancy. Cisco Catalyst 9200 Series switches support redundancy with dual fans. On the C9200 SKUs, the fan units are field-replaceable, whereas on the fixed C9200L SKUs, the fan units are fixed. C9200CX SKUs are fanless.

Table 7 lists the fan module part number.

**Table 7.** Fan modules

Model	Description
FAN-T2=	Fan module

## Performance and scalability

Table 8 lists performance and scalability metrics for Cisco Catalyst 9200 Series switches. Table 9 lists the bandwidth specifications.

### Performance specifications

**Table 8.** Performance specifications

Description	C9200 SKUs	C9200L SKUs	C9200CX SKUs
Virtual Networks	4 for C9200-24T, C9200-24P, C9200-48T, C9200-48P, C9200- 24PXG, C9200-48PXG, C9200-48PL  32 for C9200-24PB, C9200-48PB	1	16

Description	C9200 SKUs	C9200L SKUs	C9200CX SKUs
Stacking bandwidth	160 Gbps	80 Gbps	N/A
Total number of MAC addresses	32,000	16,000	32,000
Total number of IPv4 routes (ARP plus learned routes)	14,000 (10,000 direct routes and 4,000 indirect routes)	11,000 (8,000 direct routes and 3,000 indirect routes)	14,000 (10,000 direct routes and 4,000 indirect routes)
IPv4 routing entries	4,000	3,000	4,000
IPv6 routing entries	2,000	1,500	2,000
Multicast routing scale	1,000	1,000	1,000
QoS scale entries	1,000	1,000	1,000
ACL scale entries	1,600	1,500	1,600
Packet buffer per SKU	6 MB buffers for 24- or 48-port Gigabit Ethernet models, 12MB buffers for 24 or 48 port multigigabit models	6 MB buffers for 24- or 48-port Gigabit Ethernet models, 12 MB buffers for 24 or 48 port multigigabit models	6 MB buffers
Flexible NetFlow (FNF) entries	16,000 flows on 24- and 48-port Gigabit Ethernet models	16,000 flows on 24- and 48-port Gigabit Ethernet models, 32,000 flows on 24 or 48 port multigigabit models	16,000 flows
DRAM	4 GB	2 GB	4 GB
Flash	4 GB	4 GB	8 GB
VLAN IDs	4096	4096	4096
PVST Instances	128	128	128
STP Virtual Ports (Port VLANs) for PVST	13,000	13,000	13,000
STP Virtual Ports (Port VLANs) for MST	13,000	13,000	13,000
Total Switched Virtual Interfaces (SVIs)	512	512	512
Jumbo frames	9198 bytes	9198 bytes	9198 bytes
Wireless bandwidth per switch	Up to 48 Gbps on 24-port and 48-port Gigabit Ethernet model	N/A	N/A
IP SGT binding scale	8K	10K	8K
Number of IPv4 bindings	8K	10K	8K

Description	C9200 SKUs	C9200L SKUs	C9200CX SKUs
Number of SGT/DGT policies	2K	2K	2K
Number of SXP Sessions	200	200	200

## Bandwidth specifications

**Table 9.** Bandwidth specifications

Description	Switching capacity	Switch capacity with Stacking	Forwarding rate	Forwarding rate with Stacking
<b>C9200-24T</b>	128 Gbps	288 Gbps	95.23 Mpps	214 Mpps
<b>C9200-24P</b>	128 Gbps	288 Gbps	95.23 Mpps	214 Mpps
<b>C9200-24PB</b>	128 Gbps	288 Gbps	95.23 Mpps	214 Mpps
<b>C9200-24PXG</b>	352 Gbps	532 Gbps	261.90 Mpps	395 Mpps
<b>C9200-48T</b>	176 Gbps	336 Gbps	130.95 Mpps	250 Mpps
<b>C9200-48P</b>	176 Gbps	336 Gbps	130.95 Mpps	250 Mpps
<b>C9200-48PL</b>	176 Gbps	336 Gbps	130.95 Mpps	250 Mpps
<b>C9200-48PB</b>	176 Gbps	336 Gbps	130.95 Mpps	250 Mpps
<b>C9200-48PXG</b>	400 Gbps	580 Gbps	297.61 Mpps	431 Mpps
<b>C9200L-24T-4G</b>	56 Gbps	136 Gbps	41.67 Mpps	101 Mpps
<b>C9200L-24P-4G</b>	56 Gbps	136 Gbps	41.67 Mpps	101 Mpps
<b>C9200L-48T-4G</b>	104 Gbps	184 Gbps	77.38 Mpps	137 Mpps
<b>C9200L-48P-4G</b>	104 Gbps	184 Gbps	77.38 Mpps	137 Mpps
<b>C9200L-48PL-4G</b>	104 Gbps	184 Gbps	77.38 Mpps	137 Mpps
<b>C9200L-24T-4X</b>	128 Gbps	208 Gbps	95.23 Mpps	155 Mpps
<b>C9200L-24P-4X</b>	128 Gbps	208 Gbps	95.23 Mpps	155 Mpps
<b>C9200L-48T-4X</b>	176 Gbps	256 Gbps	130.95 Mpps	190 Mpps
<b>C9200L-48P-4X</b>	176 Gbps	256 Gbps	130.95 Mpps	190 Mpps
<b>C9200L-48PL-4X</b>	176 Gbps	256 Gbps	130.95 Mpps	190 Mpps
<b>C9200L-24PXG-4X</b>	272 Gbps	352 Gbps	214.28 Mpps	262 Mpps
<b>C9200L-24PXG-2Y</b>	292 Gbps	372 Gbps	229.16 Mpps	277 Mpps

Description	Switching capacity	Switch capacity with Stacking	Forwarding rate	Forwarding rate with Stacking
<b>C9200L-48PXG-4X</b>	392 Gbps	472 Gbps	291.66 Mpps	351 Mpps
<b>C9200L-48PXG-2Y</b>	340 Gbps	420 Gbps	252.97 Mpps	313 Mpps
<b>C9200CX-12T-2X2G</b>	70 Gbps	N/A	52.08 Mpps	N/A
<b>C9200CX-12P-2X2G</b>	68 Gbps	N/A	50.59 Mpps	N/A
<b>C9200CX-8P-2X2G</b>	60 Gbps	N/A	44.64 Mpps	N/A
<b>C9200CX-8UXG-2X</b>	128 Gbps	N/A	95.23 Mbps	N/A
<b>C9200CX-12P-2XGH</b>	68 Gbps	N/A	50.59 Mpps	N/A
<b>C9200CX-8P-2XGH</b>	60 Gbps	N/A	44.64 Mpps	N/A
<b>C9200CX-8UXG-2XH</b>	128 Gbps	N/A	95.23 Mbps	N/A

\*Measured with 64 byte packets

## Software

### Platform software benefits

#### Cisco IOS XE

Cisco IOS XE Software opens a completely new paradigm in network configuration, operation, and monitoring through network automation. Cisco's automation solution is open, standards-based, and extensible across the entire lifecycle of a network device. The various automation mechanisms are outlined below.

- **Automated device provisioning** is the ability to automate the process of upgrading software images and installing configuration files on Cisco Catalyst switches when they are being deployed in the network for the first time. Cisco provides turnkey solutions such as Plug and Play and Preboot Execution Environment (PXE) that enable an effortless and automated deployment.
- **API-driven configuration** is available with modern network switches such as Cisco Catalyst 9200 Series switches. It supports a wide range of automation features and provides robust open APIs over NETCONF and RESTCONF using YANG data models for external tools, both off the shelf and custom built, to automatically provision network resources.
- **Granular visibility** enables model-driven telemetry to stream data from a switch to a destination. The data to be streamed is identified through subscription to a data set in a YANG model. The subscribed data set is streamed to the destination at specified intervals. Additionally, Cisco IOS XE enables the push model. It provides near-real-time monitoring of the network, leading to quick detection and rectification of failures. Cloud monitoring for Catalyst is also available.
- **Seamless software upgrades and patching** supports OS resilience. On Cisco Catalyst 9200 Series switches Cisco IOS XE supports cold patching with reboot, which provides fixes for critical bugs and security vulnerabilities between regular maintenance releases. This support lets you add patches without having to wait for the next maintenance release. Cold patching requires the switch to be rebooted after patching to allow the changes to take effect.



- **Trustworthy solutions built with Cisco Trust Anchor Technologies** provide a highly secure foundation for Cisco products. With Cisco Catalyst 9200 Series switches, these technologies enable hardware and software authenticity assurance for supply chain trust and strong mitigation against man-in-the-middle attacks that compromise software and firmware. Trust Anchor capabilities include image signing, Secure Boot, and Cisco Trust Anchor module.
- **High availability:** Cisco Catalyst 9200 Series switches support high-availability features, including the following:
  - Cross-stack EtherChannel provides the ability to configure Cisco EtherChannel technology across different members of the stack for high resiliency.
  - IEEE 802.1s Multiple Spanning Tree Protocol (MSTP) provides rapid spanning tree convergence independent of spanning tree timers and also offers the benefit of Layer 2 load balancing and distributed processing.
  - Per-VLAN Rapid Spanning Tree (PVRST+) allows rapid spanning tree (IEEE 802.1w) reconvergence on a per-VLAN spanning tree basis, providing simpler configuration than MSTP. In both MSTP and PVRST+ modes, stacked units behave as a single spanning tree node.
  - Switch-port auto-recovery (“err-disable” recovery) automatically attempts to reactivate a link that is disabled because of a network error.
  - The Catalyst 9200 Series platform delivers the best SSO resiliency architecture in a stackable solution with sub-50-ms failover.

## The Foundation of Software-Defined Access

### Secure Segmentation with SD-Access

#### Software-Defined Access

The enterprise network lies at the heart of digital transformation. A network that is open, programmable, integrated, and secure maximizes business agility, allowing new business opportunities to be pursued and captured.

Cisco DNA with SD-Access is the network fabric that powers business. It is an open and extensible software-driven architecture that accelerates and simplifies your enterprise network operations. The programmable architecture frees your IT staff from time-consuming, repetitive network configuration tasks so they can focus instead on innovation that positively transforms your business. SD-Access enables policy-based automation from edge to cloud with foundational capabilities. These include:

- Simplified device deployment
- Unified management of wired and wireless networks
- Network virtualization and segmentation
- Group-based policies
- Context-based analytics

- 
- **SD-Access:** Cisco Catalyst 9200 Series switches are the entry-level devices for SD-Access, Cisco's lead enterprise architecture, with policy-based automation from edge to cloud.
    - Simplified segmentation and micro-segmentation, with predictable performance and scalability
    - Automation through Cisco Catalyst Center
    - Policy handled through the Cisco Identity Services Engine (ISE)
    - Faster launch of new business services and significantly improved issue resolution time

#### Assurance

- Full network visibility and monitoring
- End-to-end Quality of Experience (QoE)
- Fast issue resolution and network remediation
- Plug and Play (PnP) enabled: A simple, secure, unified, and integrated offering to ease new branch or campus device rollouts or updates to an existing network

#### Cloud Security

##### Umbrella Integration

- **Umbrella Integration:** Small to midsize networks reliant on managed service providers can now host Cisco Umbrella agent directly on their Catalyst 9200 series switches. This allows the business to easily customize their DNS filtering policies to prevent BYOD or IoT guest or corporate users from accessing malicious or inappropriate websites, without having to rely on the MSP to push the policies out. It also lets them optimize use of bandwidth by allowing direct cloud access for trusted apps. Requires Cisco DNA-Advantage License and Umbrella License per device.

##### Full Flexible NetFlow

- **Full Flexible NetFlow (FNF):** Cisco IOS FNF is the next generation in flow visibility technology. It enables optimization of the network infrastructure, reduces operation costs, and improves capacity planning and security incident detection with increased flexibility and scalability. Catalyst 9200 Series switches are capable of up to 16,000 flow entries on 48-port, 24, 12 and 8 port models.

#### QoS

- **Superior QoS:** Cisco Catalyst 9200 Series switches offer Gigabit Ethernet speeds with intelligent services that keep traffic flowing smoothly, even at 10 times the normal network speed. Industry-leading mechanisms for cross-stack marking, classification, and scheduling deliver superior performance for data, voice, and video traffic at wire speed. Superior QoS includes granular wireless bandwidth management and fair sharing, 802.1p Class of Service (CoS) and Differentiated Services Code Point (DSCP) field classification, Shaped Round Robin (SRR) scheduling, Committed Information Rate (CIR), and eight egress queues per port.

---

## Smart operation

### Simplified Campus Automation

Simplified Campus Automation is designed to optimize the discovery and configuration of devices in your network with a more streamlined simple and easy-to-use automation tool. With features such as simplified discovery, IT can discover devices within the network within just a few steps. Also available is a more streamlined GUI that provides a better simplified view of switch configurations and software details on a port-by-port basis.

### Cloud Monitoring for Catalyst

Cloud monitoring for Catalyst provides an integrated view of Catalyst 9200 switches, seamlessly integrated into the Meraki dashboard experience. Cloud monitoring provides the ability to view Catalyst 9200 Series switch statistics, configuration, and troubleshooting capabilities. While the switch will be automatically tagged with “Monitor Only” in the dashboard to distinguish from fully managed Meraki switches, “Monitor Only” Catalyst 9200 switch appears and functions very similarly to Meraki MS switches in the dashboard, including a visual representation of connected ports and traffic information.

With cloud monitoring, Cisco IOS XE features, configuration and management continues to be done via The various automation mechanisms are outlined above. As a monitoring tool, most operations are read-only. All live troubleshooting capabilities will also not result in persistent changes to configuration following the troubleshooting operation.

### WebUI

WebUI is an embedded GUI-based device-management tool that provides the ability to provision the device, to simplify device deployment and manageability, and to enhance the user experience. It comes with the default image, so there is no need to enable anything or install any license on the device. You can use WebUI to build configurations, and to monitor and troubleshoot the device without having CLI expertise.

### RFID tags

Cisco Catalyst 9200 Series switches have an embedded RFID tag that facilitates easy asset and inventory management using commercial RFID readers.

### Blue beacon

Cisco Catalyst 9200 Series switches support blue beacon LEDs for easy identification of the switch being accessed. C9200L and C9200 models support both front and back blue beacon LEDs. C9200CX models support front blue beacon LED.

### Efficient switch operation

Cisco Catalyst 9200 Series switches provide optimum power saving with Energy Efficient Ethernet (EEE) on the RJ-45 ports and low-power operations for industry best-in-class power management and power consumption capabilities. The ports support reduced power modes so that ports not in use can move into a lower power utilization state. Other efficient switch operation features are as follows:

- Per-port power consumption command allows customers to specify a maximum power setting on an individual port.
- Per-port PoE power sensing measures actual power being drawn, enabling more intelligent control of powered devices. The PoE MIB provides proactive visibility into power usage and allows you to set different power-level thresholds.

---

## Bluetooth

Cisco Catalyst 9200 Series switches have support to connect a Bluetooth dongle to your switch, enabling you to use this wireless interface as an IP management port interface. The port can be used for configuration and troubleshooting using WebUI or the Command-Line Interface (CLI), and to transfer images and configurations.

## Storage

Cisco Catalyst 9200CX switches have support for up to 4G Micro-SD card storage.

## High-performance IP routing

The Cisco Express Forwarding hardware routing architecture delivers extremely high-performance IP routing in Cisco Catalyst 9200 Series switches, based on:

- IP unicast routing protocols (including static, Routing Information Protocol Version 1 [RIPv1], RIPv2, RIPv3, and Open Shortest Path First [OSPF], Routed Access) are supported for small network routing applications with the Network Essentials stack. Equal-cost routing facilitates Layer 3 load balancing and redundancy across the stack.
- Advanced IP unicast routing protocols (including Full [OSPF], Enhanced Interior Gateway Routing Protocol [EIGRP], and Intermediate System-to-Intermediate System Version 4 [IS-ISv4]) are supported for load balancing and for constructing scalable LANs. IPv6 routing (using OSPFv3 and EIGRPv6) is supported in hardware for maximum performance.
- Protocol-Independent Multicast (PIM) for IP multicast routing is supported, including PIM sparse mode (PIM SM), and Source-Specific Multicast (SSM).
- IPv6 addressing is supported on interfaces with appropriate show commands for monitoring and troubleshooting.

## Licensing

### Introduction to Smart Licensing

Cisco Smart Licensing is a flexible licensing model that provides you with an easier, faster, and more consistent way to purchase and manage software across the Cisco portfolio and across your organization. And it's secure – you control what users can access. With Smart Licensing you get:

- **Easy Activation:** Smart Licensing establishes a pool of software licenses that can be used across the entire organization—no more PAKs (Product Activation Keys).
- **Unified Management:** My Cisco Entitlements (MCE) provides a complete view into all of your Cisco products and services in an easy-to-use portal, so you always know what you have and what you are using.
- **License Flexibility:** Your software is not node-locked to your hardware, so you can easily use, and transfer licenses as needed.

To use Smart Licensing, you must first set up a Smart Account on Cisco Software Central ([software.cisco.com](https://software.cisco.com)).

For a more detailed overview on Cisco Licensing, go to [cisco.com/go/licensingguide](https://cisco.com/go/licensingguide)

## Software licenses

**Table 10.** License matrix

	Cisco Catalyst Software Subscription new	Cisco DNA subscription	Network Stack
<b>Packages<sup>1</sup></b>	3, 5 or 7 Year Terms	3, 5 or 7 Year Terms	Perpetual
<b>Tiers</b>	Advantage, Essentials	Advantage, Essentials	Advantage, Essentials
<b>Portability<sup>2</sup></b>	✓	✓	✓
<b>Management options</b>	Catalyst Center, Meraki Dashboard	Catalyst Center, Meraki Dashboard	CLI, Web UI
<b>Included support</b>	Base product-level support for Hardware, Software and OS	Software support (SWSS)	X
<b>Included<sup>3</sup> add-ons: Common ISE policy, Thousand Eyes network and application assurance, Cisco Spaces</b>	X	X	X

<sup>1</sup> For all new orders, subscription licenses are mandatory and must be of the same tier as network licenses

<sup>2</sup> Portability within the same Catalyst 9K series of hardware

<sup>3</sup> Only available with Advantage tier

## Network licensing

**Table 11.** Network Essentials and Advantage (Perpetual) features

Features on Cisco Catalyst uplink switches	Network Essentials	Network Advantage
<b>Switch fundamentals</b> Layer 2, Static Routing, Routed Access (RIP, EIGRP Stub, OSPF -- 1000 routes), PBR, PIM Stub Multicast (1000 routes), PVLAN, VRRP, PBR, CDP, QoS, FHS, 802.1X, MACsec-128, CoPP, SXP, IP SLA Responder, SSO	Yes	Yes
<b>Advanced switch capabilities and scale</b> EIGRP, HSRP, IS-IS, BSR, MSDP, IP SLA, OSPF BGP on C9200CX SKUs	No	Yes
<b>Network segmentation</b> VRF, VXLAN, LISP, SGT	No	Yes
<b>Automation</b> NETCONF, RESTCONF, YANG, PnP Agent, PnP	Yes	Yes
<b>Telemetry and visibility</b> Model-driven telemetry, sampled NetFlow, SPAN, RSPAN	Yes	Yes

Features on Cisco Catalyst uplink switches	Network Essentials	Network Advantage
<b>IoT integration</b> PTP on C9200CX SKUs	No	Yes
<b>Advanced security</b> MACsec-256 on C9200CX SKUs	No	Yes

## Cisco Catalyst Software licensing

**Table 12.** Cisco Catalyst Essentials and Advantage Package Features

Features	Cisco Catalyst Essentials	Cisco Catalyst Advantage	Cisco DNA Essentials	Cisco DNA Advantage
<b>Simplified Campus Automation</b> Simplified Campus Automation optimizes the discovery and configuration of devices in your network with a more streamlined simple and easy-to-use automation tool.	Yes	Yes	Yes	Yes
<b>Advanced telemetry and visibility</b> Full Flexible NetFlow, EEM	Yes	Yes	Yes	Yes
<b>Optimized telemetry and visibility</b> AVC (NBAR2)	No	Yes	No	Yes
<b>Day-0 network bring-up automation</b> Cisco Network Plug-and-Play application, network settings, device credentials, LAN automation, host onboarding	Yes	Yes	Yes	Yes
<b>Element management</b> Discovery, inventory, topology, software image, licensing, and configuration management	Yes	Yes	Yes	Yes
<b>Element management</b> Patch management	No	Yes	No	Yes
<b>Basic Assurance</b> Health dashboards – Network, Client, Application; switch and wired client health monitoring	Yes	Yes	Yes	Yes
<b>SD-Access</b> Policy-based automation and assurance for wired and wireless	No	Yes	No	Yes

Features	Cisco Catalyst Essentials	Cisco Catalyst Advantage	Cisco DNA Essentials	Cisco DNA Advantage
<b>Network assurance and analytics</b> <b>Global insights, trends, compliance, custom reports; switch 360, wired client 360; fabric and non-fabric insights; app health, app 360, app performance (loss, latency, jitter)</b>	No	Yes	No	Yes
<b>Cloud monitoring for Catalyst</b>	Yes*	Yes	Yes*	Yes

\*Limited device visibility

For a full list of features, please refer to Cisco Feature Navigator [cfnng.cisco.com](https://cfnng.cisco.com)

Cisco Catalyst 9200 Series switches run on Cisco IOS XE Release 16.9.2 or later. This software release includes all the features listed earlier in the Platform Software Benefits section.

## Managing licenses with Smart Accounts

Creating Smart Accounts by using the Cisco Smart Software Manager (Cisco SSM) enables you to order devices and licensing packages and also manage your software licenses from a centralized website. You can set up Cisco SSM to receive daily email alerts and to be notified of expiring add-on licenses that you want to renew.

You must order an add-on license in order to purchase a switch. When the license term expires, you can either renew the add-on license to continue using it or deactivate the add-on license and then reload the switch to continue operating with the base license capabilities.

Both the base and add-on licenses are also available for a 90-day evaluation period. An evaluation license is activated temporarily, without purchase. An expired evaluation license cannot be reactivated after reload.

**Note:** It is not required to deploy Cisco Catalyst Center, just to use one of the above packages.

Table 11 shows the features included in the Network Essentials and Advantage packages.

Table 12 shows the features included in the Cisco DNA Essentials and Advantage packages.

## Specifications

### Dimensions, weight, acoustic, mean time between failures

Table 13-16 show the dimensions, weights, acoustic, and mean time between failures of all models of Cisco Catalyst 9200 Series switches.

**Table 13.** Model Dimensions

Platform Physical Specifications				
	Chassis Dimensions		Chassis + FEP + Fan Dimensions (HxWxD)	
Model	Inches	Centimeters	Inches	Centimeters
<b>C9200-24T</b>	1.73 x 17.5 x 13.8	4.4 x 44.5 x 35.0	1.73 x 17.5 x 15.4	4.4 x 44.5 x 39.1
<b>C9200-24P</b>	1.73 x 17.5 x 13.8	4.4 x 44.5 x 35.0	1.73 x 17.5 x 15.4	4.4 x 44.5 x 39.1
<b>C9200-24PB</b>	1.73 x 17.5 x 13.8	4.4 x 44.5 x 35.0	1.73 x 17.5 x 15.4	4.4 x 44.5 x 39.1
<b>C9200-24PXG</b>	1.73 x 17.5 x 13.8	4.4 x 44.5 x 35.0	1.73 x 17.5 x 15.4	4.4 x 44.5 x 39.1
<b>C9200-48T</b>	1.73 x 17.5 x 13.8	4.4 x 44.5 x 35.0	1.73 x 17.5 x 15.4	4.4 x 44.5 x 39.1
<b>C9200-48P</b>	1.73 x 17.5 x 13.8	4.4 x 44.5 x 35.0	1.73 x 17.5 x 15.4	4.4 x 44.5 x 39.1
<b>C9200-48PL</b>	1.73 x 17.5 x 13.8	4.4 x 44.5 x 35.0	1.73 x 17.5 x 15.4	4.4 x 44.5 x 39.1
<b>C9200-48PB</b>	1.73 x 17.5 x 13.8	4.4 x 44.5 x 35.0	1.73 x 17.5 x 15.4	4.4 x 44.5 x 39.1
<b>C9200-48PXG</b>	1.73 x 17.5 x 13.8	4.4 x 44.5 x 35.0	1.73 x 17.5 x 15.4	4.4 x 44.5 x 39.1
<b>C9200L-24T-4G</b>	1.73 x 17.5 x 11.3	4.4 x 44.5 x 28.8	1.73 x 17.5 x 12.9	4.4 x 44.5 x 32.9
<b>C9200L-24P-4G</b>	1.73 x 17.5 x 11.3	4.4 x 44.5 x 28.8	1.73 x 17.5 x 12.9	4.4 x 44.5 x 32.9
<b>C9200L-48T-4G</b>	1.73 x 17.5 x 11.3	4.4 x 44.5 x 28.8	1.73 x 17.5 x 12.9	4.4 x 44.5 x 32.9
<b>C9200L-48P-4G</b>	1.73 x 17.5 x 11.3	4.4 x 44.5 x 28.8	1.73 x 17.5 x 12.9	4.4 x 44.5 x 32.9
<b>C9200L-48PL-4G</b>	1.73 x 17.5 x 11.3	4.4 x 44.5 x 28.8	1.73 x 17.5 x 12.9	4.4 x 44.5 x 32.9
<b>C9200L-24T-4X</b>	1.73 x 17.5 x 11.3	4.4 x 44.5 x 28.8	1.73 x 17.5 x 12.9	4.4 x 44.5 x 32.9
<b>C9200L-24P-4X</b>	1.73 x 17.5 x 11.3	4.4 x 44.5 x 28.8	1.73 x 17.5 x 12.9	4.4 x 44.5 x 32.9
<b>C9200L-48T-4X</b>	1.73 x 17.5 x 11.3	4.4 x 44.5 x 28.8	1.73 x 17.5 x 12.9	4.4 x 44.5 x 32.9
<b>C9200L-48P-4X</b>	1.73 x 17.5 x 11.3	4.4 x 44.5 x 28.8	1.73 x 17.5 x 12.9	4.4 x 44.5 x 32.9
<b>C9200L-48PL-4X</b>	1.73 x 17.5 x 11.3	4.4 x 44.5 x 28.8	1.73 x 17.5 x 12.9	4.4 x 44.5 x 32.9
<b>C9200L-24PXG-4X</b>	1.73 x 17.5 x 13.8	4.4 x 44.5 x 35.0	1.73 x 17.5 x 15.4	4.4 x 44.5 x 39.1
<b>C9200L-24PXG-2Y</b>	1.73 x 17.5 x 13.8	4.4 x 44.5 x 35.0	1.73 x 17.5 x 15.4	4.4 x 44.5 x 39.1
<b>C9200L-48PXG-4X</b>	1.73 x 17.5 x 13.8	4.4 x 44.5 x 35.0	1.73 x 17.5 x 15.4	4.4 x 44.5 x 39.1
<b>C9200L-48PXG-2Y</b>	1.73 x 17.5 x 13.8	4.4 x 44.5 x 35.0	1.73 x 17.5 x 15.4	4.4 x 44.5 x 39.1
<b>C9200CX-12T-2X2G</b>	1.73 x 10.6 x 6.5	4.4 x 26.9 x 16.5	1.73 x 10.6 x 6.5	4.4 x 26.9 x 16.5
<b>C9200CX-12P-2X2G</b>	1.73 x 10.6 x 9.6	4.4 x 26.9 x 24.4	1.73 x 10.6 x 9.6	4.4 x 26.9 x 24.4



Platform Physical Specifications				
	Chassis Dimensions		Chassis + FEP + Fan Dimensions (HxWxD)	
Model	Inches	Centimeters	Inches	Centimeters
<b>C9200CX-8P-2X2G</b>	1.73 x 10.6 x 9.6	4.4 x 26.9 x 24.4	1.73 x 10.6 x 9.6	4.4 x 26.9 x 24.4
<b>C9200CX-8UXG-2X</b>	1.73 x 10.6 x 9.6	4.4 x 26.9 x 24.4	1.73 x 10.6 x 9.6	4.4 x 26.9 x 24.4
<b>C9200CX-12P-2XGH</b>	1.73 x 10.6 x 9.6	4.4 x 26.9 x 24.4	1.73 x 10.6 x 9.6	4.4 x 26.9 x 24.4
<b>C9200CX-8P-2XGH</b>	1.73 x 10.6 x 9.6	4.4 x 26.9 x 24.4	1.73 x 10.6 x 9.6	4.4 x 26.9 x 24.4
<b>C9200CX-8UXG-2XH</b>	1.73 x 10.6 x 9.6	4.4 x 26.9 x 24.4	1.73 x 10.6 x 9.6	4.4 x 26.9 x 24.4

**Table 14.** Model Weights

Model	Pounds	Kilograms
<b>C9200-24T</b>	11.02	5.0
<b>C9200-24P</b>	12.12	5.5
<b>C9200-24PB</b>	12.12	5.0
<b>C9200-24PXG</b>	11.33	5.1
<b>C9200-48T</b>	11.02	5.0
<b>C9200-48P</b>	12.12	5.5
<b>C9200-48PL</b>	12.12	5.5
<b>C9200-48PB</b>	12.12	5.5
<b>C9200-48PXG</b>	11.98	5.45
<b>C9200L-24T-4G</b>	9.59	4.35
<b>C9200L-24P-4G</b>	10.38	4.71
<b>C9200L-48T-4G</b>	9.97	4.53
<b>C9200L-48P-4G</b>	10.58	4.80
<b>C9200L-48PL-4G</b>	10.58	4.80
<b>C9200L-24T-4X</b>	9.59	4.35
<b>C9200L-24P-4X</b>	10.38	4.71
<b>C9200L-48T-4X</b>	9.97	4.53
<b>C9200L-48P-4X</b>	10.58	4.80

Model	Pounds	Kilograms
C9200L-48PL-4X	10.58	4.80
C9200L-24PXG-4X	12	5.44
C9200L-24PXG-2Y	12	5.44
C9200L-48PXG-4X	12.6	5.71
C9200L-48PXG-2Y	12.6	5.71
C9200CX-12T-2X2G	4.0	1.81
C9200CX-12P-2X2G	6.6	2.99
C9200CX-8P-2X2G	6.6	2.99
C9200CX-8UXG-2X	7.0	3.18
C9200CX-12P-2XGH	6.6	2.99
C9200CX-8P-2XGH	6.6	2.99
C9200CX-8UXG-2XH	7.0	3.18

**Table 15.** Model Mean time between failures metrics

Mean time between failures (hours)	
C9200-24T	587,800
C9200-24P	422,310
C9200-24PB	434,220
C9200-24PXG	353,960
C9200-48T	571,440
C9200-48P	375,570
C9200-48PL	375,570
C9200-48PB	384,980
C9200-48PXG	320,440
C9200L-24T-4G	531,030
C9200L-24P-4G	392,210
C9200L-48T-4G	508,700
C9200L-48P-4G	347,760

Mean time between failures (hours)	
C9200L-48PL-4G	347,760
C9200L-24T-4X	525,990
C9200L-24P-4X	390,310
C9200L-48T-4X	503,400
C9200L-48P-4X	346,270
C9200L-48PL-4X	346,270
C9200L-24PXG-4X	379,410
C9200L-24PXG-2Y	374,730
C9200L-48PXG-4X	337,360
C9200L-48PXG-2Y	337,260
C9200CX-12T-2X2G	960,180
C9200CX-12P-2X2G	704,430
C9200CX-8P-2X2G	736,000
C9200CX-8UXG-2X	711,500
C9200CX-12P-2XGH	702,630
C9200CX-8P-2XGH	734,030
C9200CX-8UXG-2XH	709,660
PWR-C5-125WAC	3,332,120
PWR-C5-600WAC	1,600,060
PWR-C5-1KWAC	1,600,060
PWR-C6-125WAC	3,332,120
PWR-C6-600WAC	1,600,060
PWR-C6-1KWAC	1,600,060

**Table 16.** Model Environmental Ranges

Environmental ranges	
<b>Acoustic noise</b>	9200L/9200
Measured per ISO 7779 and declared per ISO 9296	With AC power supply (with 48 PoE+ ports loaded):
Bystander positions operating to an ambient temperature of 25° C	<ul style="list-style-type: none"> <li>• LpA: 42dB typical, 45 dB max</li> <li>• LwA: 5.3B typical, 5.6B max</li> </ul>
	With AC power supply (with 24 PoE+ ports loaded):
	<ul style="list-style-type: none"> <li>• LpA: 42dB typical, 45 dB max</li> <li>• LwA: 5.3B typical, 5.6B max</li> </ul>
	Typical: Noise emission for a typical configuration
	Maximum: Statistical maximum to account for variation in production

## Connectors

Table 17 shows the supported connectors for Cisco Catalyst 9200 Series switches.

**Table 17.** Connectors

Power	
<b>Connectors and cabling</b>	<ul style="list-style-type: none"> <li>• 1000BASE-T ports: RJ-45 connectors, 4-pair Cat 5E UTP cabling</li> <li>• 1000BASE-T SFP-based ports: RJ-45 connectors, 4-pair Cat 5E UTP cabling</li> <li>• 100BASE-FX, 1000BASE-SX, -LX/LH, -ZX, -BX10, Dense Wavelength-Division Multiplexing (DWDM) and Coarse Wavelength-Division Multiplexing (CWDM) SFP transceivers: LC fiber connectors (single-mode or multimode fiber)</li> <li>• 10GBASE-SR, LR, LRM (only C9200), ER, ZR, DWDM SFP+ transceivers: LC fiber connectors (single-mode or multimode fiber)</li> <li>• SFP+ connector</li> <li>• Cisco StackWise-160/80 stacking ports: copper-based Cisco StackWise cabling</li> <li>• Ethernet management port: RJ-45 connectors, 4-pair Cat 5 UTP cabling</li> <li>• Management console port: 9200/9200L – RJ45 or mini USB connectors. –RJ-45-to-DB9 cable for PC connections, USB-C adaptor, USB adaptor; 9200CX – Micro USB connector, with option to convert to RJ45 with CAB-CON-USBRJ45</li> </ul>
<b>Power connectors</b>	<ul style="list-style-type: none"> <li>• Internal power supply connector: The internal power supply is an auto-ranging unit. It supports input voltages between 100 and 240 VAC. Use the supplied AC power cord to connect the AC power connector to an AC power outlet.</li> </ul>

For the latest Cisco transceiver module compatibility information, refer to

[https://www.cisco.com/c/en/us/td/docs/interfaces\\_modules/transceiver\\_modules/compatibility/matrix/TMG\\_C\\_M\\_Tool\\_User\\_Manual.html](https://www.cisco.com/c/en/us/td/docs/interfaces_modules/transceiver_modules/compatibility/matrix/TMG_C_M_Tool_User_Manual.html).

## Management and standards support

Table 18 shows management and standards support for Cisco Catalyst 9200 Series switches.

**Table 18.** Management and standards support\*

Description	Specification	
Management	BRIDGE-MIB	CISCO-NHRP-EXT-MIB
	CISCO-BRIDGE-EXT-MIB	CISCO-NTP-MIB
	CISCO-BULK-FILE-MIB	CISCO-PAGP-MIB
	CISCO-CABLE-DIAG-MIB	CISCO-PORT-SECURITY-MIB
	CISCO-CALLHOME-MIB	CISCO-PORT-STORM-CONTROL-MIB
	CISCO-CEF-MIB	CISCO-POWER-ETHERNET-EXT-MIB
	CISCO-CIRCUIT-INTERFACE-MIB	CISCO-PRIVATE-VLAN-MIB
	CISCO-CONFIG-COPY-MIB	CISCO-PROCESS-MIB
	CISCO-CONFIG-MAN-MIB	CISCO-PRODUCTS-MIB
	CISCO-DEVICE-LOCATION-MIB	CISCO-RF-MIB
	CISCO-DHCP-SNOOPING-MIB	CISCO-RTP-METRICS-MIB
	CISCO-EIGRP-MIB	CISCO-RTTMON-ICMP-MIB
	CISCO-EMBEDDED-EVENT-MGR-MIB	CISCO-STACKWISE-MIB
	CISCO-ENTITY-FRU-CONTROL-MIB	CISCO-STP-EXTENSIONS-MIB
	CISCO-ENTITY-SENSOR-MIB	CISCO-SYSLOG-MIB
	CISCO-ENTITY-VENDORTYPE-OID-MIB	CISCO-TCP-MIB
	CISCO-ERR-DISABLE-MIB	CISCO-UDLD-MIB
	CISCO-FLASH-MIB	CISCO-VLAN-IFTABLE-RELATIONSHIP-MIB
	CISCO-FLOW-MONITOR-MIB	ENTITY-MIB
	CISCO-FTP-CLIENT-MIB	HC-ALARM-MIB
	CISCO-HSRP-EXT-MIB	HC-RMON-MIB
	CISCO-HSRP-MIB	IEEE8023-LAG-MIB
	CISCO-IETF-BFD-MIB	IF-MIB
	CISCO-IETF-PPVPN-MPLS-VPN-MIB	IP-FORWARD-MIB
	CISCO-IETF-PW-MPLS-MIB	IP-MIB

Description	Specification	
	CISCO-IF-EXTENSION-MIB	LLDP-EXT-MED-MIB
	CISCO-IGMP-FILTER-MIB	LLDP-MIB
	CISCO-IMAGE-LICENSE-MGMT-MIB	MAU-MIB
	CISCO-IMAGE-MIB	MPLS-L3VPN-STD-MIB
	CISCO-IP-CBR-METRICS-MIB	MPLS-LSR-STD-MIB
	CISCO-IP-STAT-MIB	MPLS-VPN-MIB
	CISCO-IP-TAP-MIB	OLD-CISCO-CHASSIS-MIB
	CISCO-IP-URPF-MIB	OLD-CISCO-CPU-MIB
	CISCO-IPSEC-FLOW-MONITOR-MIB	OLD-CISCO-INTERFACES-MIB
	CISCO-IPSEC-MIB	OLD-CISCO-IP-MIB
	CISCO-IPSEC-PROVISIONING-MIB	OLD-CISCO-MEMORY-MIB
	CISCO-IPSLA-AUTOMEASURE-MIB	OLD-CISCO-SYS-MIB
	CISCO-IPSLA-ECHO-MIB	OLD-CISCO-TCP-MIB
	CISCO-IPSLA-JITTER-MIB	OLD-CISCO-TS-MIB
	CISCO-L2-CONTROL-MIB	POWER-ETHERNET-MIB
	CISCO-L2L3-INTERFACE-CONFIG-MIB	RFC1213-MIB
	CISCO-LAG-MIB	RMON-MIB
	CISCO-LICENSE-MGMT-MIB	RMON2-MIB
	CISCO-LOCAL-AUTH-USER-MIB	SMON-MIB
	CISCO-MAC-NOTIFICATION-MIB	SNMPv2-MIB
	CISCO-MDI-METRICS-MIB	SONET-MIB
	CISCO-MEDIA-METRICS-MIB	TCP-MIB
	CISCO-MEMORY-POOL-MIB	UDP-MIB
	CISCO-MPLS-LSR-EXT-STD-MIB	CISCO-NBAR-PROTOCOL-DISCOVERY-MIB

Description	Specification	
<b>Standards</b>	EEE 802.1s	RMON I and II standards
	IEEE 802.1w	SNMPv1, v2c, and v3
	IEEE 802.1x	IEEE 802.1Q VLAN
	IEEE 802.1x-Rev	IEEE 802.3 10BASE-T specification
	IEEE 802.3ad	IEEE 802.3u 100BASE-TX specification
	IEEE 802.3af	IEEE 802.3ab 1000BASE-T specification
	IEEE 802.3at	IEEE 802.3z 1000BASE-X specification
	IEEE 802.3x full duplex on 10BASE-T, 100BASE-TX, and 1000BASE-T ports	IEEE 802.1AE - 128-bit AES MACsec inter network device encryption with MACsec Key Agreement (MKA)
	IEEE 802.1D Spanning Tree Protocol	IEEE 802.3bz (for mGig PKG SKU's only)
	IEEE 802.1p CoS prioritization	IEEE 802.3an (10GBase-T) (for mGig PKG SKU's only)

## Power supply specifications

Table 19 lists the power specifications for Cisco Catalyst 9200 Series switches based on the kind of power supply used.

**Table 19.** Power supply specifications

Description	Specification											
	PWR-C5-125WAC	PWR-C6-125WAC	PWR-C5-600WAC	PWR-C6-600WAC	PWR-C5-1KWAC	PWR-C6-1KWAC	PWR-C5-715WDC	PWR-C6-715WDC	C9200CX Internal 315W AC	C9200CX Internal 315W	C9K-80W-ADPT	C9K-ADPT-DC
<b>Power supply rated maximum</b>	125W	125W	600W	600W	1000W	1000W	715W	715W	315W	315W	80W	80W
<b>Total output BTU (note: 1000 BTU/hr = 293W)</b>	426.5 BTU/hr, 125W	426.5 BTU/hr, 125W	2047.3 BTU/hr, 600W	2047.3 BTU/hr, 600W	3412 BTU/hr, 1000W	3412 BTU/hr, 1000W	2440 BTU/hr, 715W	2440 BTU/hr, 715W	1057.1 BTU/hr, 315W	1057.1 BTU/hr, 315W	273 BTU/hr, 80W	273 BTU/hr, 80W
<b>Input-voltage range and frequency</b>	100 to 240 VAC, 50 to 60 Hz	100 to 240 VAC, 50 to 60 Hz	100 to 240 VAC, 50 to 60 Hz	100 to 240 VAC, 50 to 60 Hz	100 to 240 VAC, 50 to 60 Hz	100 to 240 VAC, 50 to 60 Hz	-40 to -72 VDC	-40 to -72 VDC	100 to 240 VAC, 50 to 60 Hz	120-418 VDC 100 to 277 VAC, 50 to 60 Hz	100 to 240 VAC, 50 to 60 Hz	18 to 60 VDC

Description	Specification											
	PWR-C5-125WAC	PWR-C6-125WAC	PWR-C5-600WAC	PWR-C6-600WAC	PWR-C5-1KWAC	PWR-C6-1KWAC	PWR-C5-715WDC	PWR-C6-715WDC	C9200CX Internal 315W AC	C9200CX Internal 315W	C9K-80W-ADPT	C9K-ADPT-DC
Input current	1.6–0.7A	1.6–0.7A	7–2.8A	7–2.8A	12–6A	12–6A	20–11.3A	20–11.3A	3.95–1.5A	3.95–0.92A	1.8A	6A – 1.6A
Output ratings	12V at 10.5A	12V at 10.5A	54V at 11.1A	54V at 11.1A	54V at 16.5A	54V at 16.5A	55V at 13.25A 5V at 0.3A	55V at 13.25A 5V at 0.3A	–55V at 4.5A 5V at 14A	–55V at 4.5A 5V at 14A	53V at 1.5A	53V at 1.5A
Output holdup time	20 ms minimum at 100 VAC	20 ms minimum at 100 VAC	20 ms minimum at 100 VAC	20 ms minimum at 100 VAC	20 ms minimum at 100 VAC	20 ms minimum at 100 VAC	2 ms minimum at –40 VDC	2 ms minimum at –40 VDC	20 ms minimum at 100 VAC	20 ms minimum at 100 VAC and 380 VDC	20 ms minimum at 100 VAC	0.5 ms minimum at 18 VDC
Power-supply input receptacles	IEC 320–C14 (IEC603 20–C14)	IEC 320–C14 (IEC603 20–C14)	IEC 320–C16 (IEC603 20–C16)	IEC 320–C16 (IEC6032 0–C16)	IEC 320–C16 (IEC603 20–C16)	IEC 320–C16 (IEC603 20–C16)	Terminal block	Terminal block	IEC 320–C14 (IEC603 20–C14)	Saf-D-Grid	IEC 320–C8 (IEC603 20–C8)	Terminal block
Power cord rating	10A	10A	15A	15A	15A	15A	25A	25A	10A	10A	7A	10A
Physical specifications	(H x W x D): 1.58" x 4.0" x 7.6" Weight: 1.5 lb (0.68 kg)	(H x W x D): 1.58" x 4.0" x 7.6" Weight: 1.5 lb (0.68 kg)	(H x W x D): 1.58" x 4.0" x 7.6" Weight: 1.7 lb (0.77 kg)	(H x W x D): 1.58" x 4.0" x 7.6" Weight: 1.7 lb (0.77 kg)	(H x W x D): 1.58" x 4.0" x 7.6" Weight: 2 lb (0.9 kg)	(H x W x D): 1.58" x 4.0" x 7.6" Weight: 2 lb (0.9 kg)	(H x W x D): 1.6" x 4.0" x 7.1" Weight: 3.5 lb (1.59 kg)	(H x W x D): 1.6" x 4.0" x 7.1" Weight: 3.5 lb (1.59 kg)	N/A	N/A	(H x W x D): 1.18" x 1.73" x 5.1" Weight: 0.6 lb (0.27 kg)	(H x W x D): 1.4" x 2.6" x 6.2" Weight: 0.8 lb (0.36 kg)
Supported Product Family	C9200, C9200L	C9200	C9200, C9200L	C9200	C9200, C9200L	C9200	C9200, C9200L	C9200	C9200CX	C9200CX	C9200CX	C9200CX



Description	Specification											
	PWR-C5-125WAC	PWR-C6-125WAC	PWR-C5-600WAC	PWR-C6-600WAC	PWR-C5-1KWAC	PWR-C6-1KWAC	PWR-C5-715WDC	PWR-C6-715WDC	C9200CX Internal 315W AC	C9200CX Internal 315W	C9K-80W-ADPT	C9K-ADPT-DC
<b>Operating temperature</b>	<p>Normal operating temperature* and altitudes:</p> <ul style="list-style-type: none"> <li>-5° C to +45° C, up to 5000 feet (1500m) (-5° C to +40° C for C9200CX-8UXG-2X and C9200CX-8UXG-2XH)</li> <li>-5° C to +40° C, up to 10,000 feet (3000m)</li> </ul> <p>*Minimum ambient temperature for cold start is 32° F (0° C)</p> <p>Short-term* exceptional conditions: (9200L/9200 only)</p> <ul style="list-style-type: none"> <li>-5° C to +50° C, up to 5000 feet (1500m)</li> <li>-5° C to +45° C, up to 10,000 feet (3000m)</li> <li>-5° C to +45° C, at sea level with single fan failure</li> </ul> <p>*Not more than following in one-year period: 96 consecutive hours, or 360 hours total, or 15 occurrences</p>											
<b>Storage temperature</b>	-40° to 158° F (-40° to 70° C)											
<b>Relative humidity operating and nonoperating noncondensing</b>	5% to 90% noncondensing											
<b>Altitude</b>	10,000 ft. (3000 meters), up to 45° C											
<b>EMC compliance</b>	<p>FCC Part 15 (CFR 47) Class A</p> <p>ICES-003 Class A</p> <p>EN 55032 Class A</p> <p>CISPR 32 Class A</p> <p>AS/NZS 3548 Class A</p> <p>BSMI Class A</p> <p>VCCI Class A</p> <p>CISPR 35</p> <p>EN 55035, EN300 386*, EN 61000-3-2, EN 61000-3-3</p>											
<b>Safety compliance</b>	UL 60950-1/62368-1, CAN/CSA-C22.2 No. 60950-1/62368-1, EN 60950-1/62368-1, IEC 60950-1/62368-1, CCC, CE Marking											
<b>LED indicators</b>	<p>"AC OK": Input power to the power supply is OK</p> <p>"PS OK": Output power from the power supply is OK</p>											

\*Use shielded cables for locations other than telecom centers

## Power consumption of Standalone 9200 Series switches

Table 20 shows the power consumption of standalone Cisco Catalyst 9200 Series switches based on Alliance for Telecommunications Industry Solutions (ATIS) testing using Internet Mix (IMIX) distribution stream traffic, with input voltage of 115VAC at 60 Hz and no PoE loading. The values given are the maximum possible power consumption numbers under the respective test scenarios.

**Table 20.** Power consumption of standalone Catalyst 9200 Series switches

				Measured P(W)															
				Half port traffic					Full port traffic					Weighted average Pw	No link	PoE test (no traffic)			
SKU	FEP	Uplink	Input	0.01%/ EEE	10%	30%	50%	100%	0.01%/ EEE	10%	30%	50%	100%			25%	50%	90%	100%
C9200-24T	125W (C5/C6)	C9200-NM-4X1G	115VAC	33.09	36.08	36.15	36.20	36.34	35.51	41.78	41.89	42.00	42.27	41.20	30.65	TBD	TBD	TBD	TBD
			230VAC	33.15	35.95	36.00	36.06	36.19	35.36	41.50	41.62	41.74	42.01	40.94	30.53	TBD	TBD	TBD	TBD
C9200-24T	125W	C9200-NM-4X10G	115VAC	33.62	36.99	37.29	37.58	38.26	35.41	42.00	42.55	43.11	44.49	41.588	32.20	TBD	TBD	TBD	TBD
			230VAC	33.70	36.85	37.13	37.41	38.10	35.40	41.75	42.30	42.85	44.22	41.364	31.90	TBD	TBD	TBD	TBD
C9200-24P	600W (C5/C6)	C9200-NM-4X1G	115VAC	43.57	47.37	47.42	47.47	47.68	46.82	53.79	53.91	54.02	54.30	53.14	40.75	150.71	251.67	416.85	457.98
			230VAC	43.38	46.92	46.95	47.03	47.18	46.35	53.23	53.34	53.45	53.76	52.59	40.43	148.14	247.03	406.62	446.27
C9200-24P	600W (C5/C6)	C9200-NM-4X10G	115VAC	44.62	48.49	48.79	49.11	49.88	47.02	54.18	54.77	55.34	56.77	53.72	42.55	144.60	245.42	410.22	451.45
			230VAC	44.32	48.06	48.37	48.66	49.40	46.41	53.38	53.99	54.51	55.96	52.94	42.26	142.29	241.14	400.76	440.37
C9200-24PXG	600W (C6)	C9200-NM-4X10G	115VAC	84.30	90.90	91.00	92.30	94.20	95.00	110.60	111.60	112.60	115.20	109.5	72.8	296.8	506.3	858.3	941.5
			230VAC	84.10	90.50	91.10	91.60	92.90	94.30	108.80	109.90	111.00	113.60	107.83	72.24	287.8	492.4	826.7	909.1
C9200-24PXG	600W (C6)	C9200-NM-2X25G	115VAC	83.41	87.59	88.56	89.19	90.85	93.96	101.38	103.32	104.89	107.22	101.22	72.52	187.94	290.47	452.61	494.88
			230VAC	81.90	86.97	87.68	88.38	90.03	92.21	99.79	101.14	102.45	105.65	99.62	71.74	185.45	283.86	441.83	480.86
C9200-24PXG	600W (C6)	C9200-NM-2X40G	115VAC	82.34	86.78	87.91	88.90	91.64	92.97	100.93	103.00	104.89	108.81	100.92	71.72	188.86	289.2	448.52	496.28
			230VAC	80.05	84.53	85.64	86.69	89.29	90.26	99.20	101.41	103.56	108.70	99.26	71.72	185.29	282.86	441.33	480.95
C9200-48T	125W (C5/C6)	C9200-NM-4X1G	115VAC	36.57	45.09	45.45	45.63	45.70	36.98	53.95	55.36	53.91	55.87	52.445	36.98	TBD	TBD	TBD	TBD
			230VAC	36.99	45.58	45.65	45.71	45.86	36.48	54.51	54.64	54.7	55.04	52.76	36.48	TBD	TBD	TBD	TBD



				Measured P(W)															
				Half port traffic					Full port traffic					Weighted average Pw	No link	PoE test (no traffic)			
SKU	FEP	Uplink	Input	0.01%/EEE	10%	30%	50%	100%	0.01%/EEE	10%	30%	50%	100%			25%	50%	90%	100%
C9200-48T	125W (C5/C6)	C9200-NM-4X10G	115VAC	38.84	47.07	48.67	48.71	50.41	39.20	56.33	58.36	58.75	61.80	55.164	38.38	TBD	TBD	TBD	TBD
			230VAC	39.1	47.11	47.91	48.37	49.65	39.46	56.32	57.25	58.19	60.72	55.074	38.67	TBD	TBD	TBD	TBD
C9200-48P	1000W (C5/C6)	C9200-NM-4X1G	115VAC	56.07	60.25	60.31	60.36	60.55	56.45	69.33	69.46	69.56	69.87	68.10	50.42	262.61	467.50	812.39	899.99
			230VAC	55.66	59.98	60.05	60.05	60.27	56.09	69.07	69.20	69.30	69.58	67.83	50.04	258.08	457.61	785.35	867.75
C9200-48P	1000W (C5/C6)	C9200-NM-4X10G	115VAC	54.27	61.71	62.20	62.68	63.88	56.114	70.93	70.95	71.92	74.39	69.79	52.26	262.38	467.41	812.23	899.40
			230VAC	53.89	61.09	61.60	62.07	63.24	55.79	69.52	70.47	71.43	73.89	68.58	51.34	257.97	457.30	785.03	867.35
C9200-48PL	600W (C6)	C9200-NM-4X1G	115VAC	43.57	47.37	47.42	47.47	47.68	46.82	53.79	53.91	54.02	54.30	53.14	40.75	150.71	251.67	416.85	457.98
			230VAC	43.38	46.92	46.95	47.03	47.18	46.35	53.23	53.34	53.45	53.76	52.59	40.43	148.14	247.03	406.62	446.27
C9200-48PL	600W (C6)	C9200-NM-4X10G	115VAC	44.62	48.49	48.79	49.11	49.88	47.02	54.18	54.77	55.34	56.77	53.72	42.55	144.60	245.42	410.22	451.45
			230VAC	44.32	48.06	48.37	48.66	49.40	46.41	53.38	53.99	54.51	55.96	52.94	42.26	142.29	241.14	400.76	440.37
C9200-48PXG	1000W (C6)	C9200-NM-4X10G	115VAC	84.26	90.86	91.02	92.26	94.18	95.01	110.55	111.62	112.62	115.2	109.46	72.3	296.81	506.33	858.27	941.49
			230VAC	84.14	90.52	91.05	91.57	92.85	94.25	108.84	109.94	111	113.6	107.86	73.2	287.79	492.42	826.74	909.07
C9200-48PXG	1000W (C6)	C9200-NM-2X25G	115VAC	87.84	95.23	95.98	96.69	98.34	99.25	113.66	115.37	116.7	120.91	112.94	77.57	300.71	513.82	872.63	957.36
			230VAC	87.12	94.14	94.79	95.42	96.99	97.59	111.99	113.52	114.86	117.82	111.13	76.53	290.61	492.91	826.5	910.08
C9200-48PXG	1000W (C6)	C9200-NM-2X40G	115VAC	88.01	94.35	95.5	96.48	99.36	98.72	113.2	115.13	117.08	121.84	112.61	76.84	296.86	503.87	861.87	957.4
			230VAC	87.02	93.09	94.15	95.16	97.79	97.28	111.43	113.57	115.66	120.67	110.94	75.84	291.54	491.67	824.85	909.78
C9200 L-24T-4G	125W (C5)	Fixed	115VAC	30.03	32.15	32.17	32.2	32.33	32.03	35.90	35.98	36.06	36.23	35.546	27.39	no PoE	no PoE	no PoE	no PoE
			230VAC	29.81	32.26	32.23	32.22	32.35	31.86	35.86	35.94	36.03	36.28	35.502	27.50	no PoE	no PoE	no PoE	no PoE
C9200 L-24P-4G	600W (C5)	Fixed	115VAC	39.28	43.98	44.04	44.08	44.22	38.95	48.47	48.6	48.74	49.00	47.571	39.59	153.06	256.56	423.44	466.34
			230VAC	38.88	43.6	43.66	43.69	43.83	38.57	48.09	48.22	48.35	48.62	47.191	39.20	150.51	252.10	413.89	455.15
C9200 L-24T-4X	125W (C5)	Fixed	115VAC	30.99	31.98	32.21	32.43	33.04	33.29	36.62	37.02	37.47	38.6	36.485	27.82	no PoE	no PoE	no PoE	no PoE
			230VAC	30.98	32.02	32.24	32.46	33.02	33.24	36.59	36.96	37.41	38.52	36.448	27.90	no PoE	no PoE	no PoE	no PoE
		Fixed	115VAC	42.83	44.15	44.62	44.72	45.39	45.45	51.08	51.52	52.2	53.49	50.758	40.17	144.82	241.99	401.32	445.35



				Measured P(W)															
				Half port traffic					Full port traffic					Weighted average Pw	No link	PoE test (no traffic)			
SKU	FEP	Uplink	Input	0.01%/EEE	10%	30%	50%	100%	0.01%/EEE	10%	30%	50%	100%			25%	50%	90%	100%
C9200 L-24P-4X	600W (C5)		230VAC	42.36	44.19	44.47	44.61	45.28	44.6	49.33	49.91	50.36	51.51	49.075	39.48	142.32	237.52	392.77	434.06
C9200 L-48T-4G	125W (C5)	Fixed	115VAC	33.85	40.11	40.20	40.24	40.34	32.74	46.65	46.88	46.96	47.33	45.327	33.85	no PoE	no PoE	no PoE	no PoE
			230VAC	33.62	40.5	40.57	40.63	40.74	33.06	46.8	46.91	47.05	47.49	45.495	34.16	no PoE	no PoE	no PoE	no PoE
C9200 L-48P-4G	1000W (C5)	Fixed	115VAC	45.07	52.15	52.22	52.28	52.44	44.6	58.59	58.7	58.81	59.1	57.242	45.82	270.96	484.59	842.07	933.03
			230VAC	44.55	51.5	51.55	51.6	51.77	44.08	57.82	57.91	58.04	58.29	56.493	45.17	266.35	474.24	814.85	899.58
C9200 L-48PL-4G	600W (C5)	Fixed	115VAC	39.28	43.98	44.04	44.08	44.22	38.95	48.47	48.6	48.74	49.00	47.571	39.59	153.06	256.56	423.44	466.34
			230VAC	38.88	43.6	43.66	43.69	43.83	38.57	48.09	48.22	48.35	48.62	47.191	39.20	150.51	252.10	413.89	455.15
C9200 L-48T-4X	125W (C5)	Fixed	115VAC	35.52	42.36	42.9	43.35	43.69	35.06	49.27	50.24	51.19	53.60	48.282	36.08	no PoE	no PoE	no PoE	no PoE
			230VAC	35.84	42.60	43.09	43.58	44.81	35.27	49.41	50.36	51.33	53.67	48.422	36.38	no PoE	no PoE	no PoE	no PoE
C9200 L-48P-4X	1000W (C5)	Fixed	115VAC	53.12	56.89	57.34	57.80	57.81	55.22	63.92	64.86	65.84	68.36	63.494	50.31	262.59	463.36	789.46	872.6
			230VAC	52.63	56.37	56.82	57.3	58.47	54.71	63.41	64.32	65.27	67.64	62.963	50.02	258.64	453.81	766.04	843.89
C9200 L-48PL-4X	600W (C5)	Fixed	115VAC	42.83	44.15	44.62	44.72	45.39	45.45	51.08	51.52	52.2	53.49	50.758	40.17	144.82	241.99	401.32	445.35
			230VAC	42.36	44.19	44.47	44.61	45.28	44.6	49.33	49.91	50.36	51.51	49.075	39.48	142.32	237.52	392.77	434.06
C9200 L-48PXG-4X	1000W (C5)	Fixed	115VAC	82.60	87.80	88.28	88.76	89.95	92.56	103.53	104.55	105.57	108.19	102.90	72.14	291.62	496.85	842.43	930.11
			230VAC	81.77	86.62	87.11	87.60	88.82	91.87	102.05	103.02	103.98	106.40	101.47	72.50	286.71	486.25	814.71	898.24
C9200 L-24PXG-4X	600W (C5)	Fixed	115VAC	70.94	73.88	74.37	74.84	76.02	77.37	84.12	85.06	86.00	88.32	83.86	64.54	173.05	271.04	431.68	472.39
			230VAC	70.10	73.04	73.62	74.07	75.15	76.74	82.96	83.86	84.78	87.09	82.75	64.04	170.02	265.51	420.96	459.88
C9200 L-48PXG-2Y	1000W (C5)	Fixed	115VAC	81.81	85.14	85.81	86.49	88.08	89.40	96.32	97.51	98.71	101.76	96.17	71.45	294.56	500.25	846.33	934.08
			230VAC	79.59	82.94	83.64	84.28	85.81	88.20	95.17	96.36	97.52	100.40	95.00	70.28	283.88	483.54	812.20	894.11

				Measured P(W)															
				Half port traffic					Full port traffic					Weighted average Pw	No link	PoE test (no traffic)			
SKU	FEP	Uplink	Input	0.01%/EEE	10%	30%	50%	100%	0.01%/EEE	10%	30%	50%	100%			25%	50%	90%	100%
C9200 L-24PXG-2Y	600W (C5)	Fixed	115VAC	70.54	73.04	73.78	74.46	76.10	76.25	83.50	84.78	86.09	89.26	83.35	65.58	178.82	280.13	446.82	489.62
			230VAC	68.89	72.02	72.66	73.35	74.93	75.32	82.00	83.34	84.64	87.87	81.92	65.01	175.55	274.59	434.38	475.39
C9200 CX-8P-2X2G	315W AC	Fixed	115VAC	34.5	35.6	35.7	35.8	35.9	35.1	37.8	37.9	38.0	38.3	37.6	33.3	86.9	150.9	254.3	280.2
			230VAC	34.3	35.4	35.5	35.5	35.7	35.0	37.5	37.6	37.8	38.0	37.3	33.1	85.9	148.8	249.4	274.5
C9200 CX-8P-2XGH	315W HVDC/AC	Fixed	277VAC	34.0	35.3	35.3	35.4	35.5	34.8	37.5	37.6	37.7	37.9	37.2	32.8	89.6	153.1	254.4	279.4
			380VDC	34.0	35.1	35.1	35.2	35.4	34.6	37.3	37.4	37.5	37.7	37.0	32.8	89.8	153.0	253.4	278.7
C9200 CX-12P-2X2G	315W AC	Fixed	115VAC	34.9	37.0	37.1	37.2	37.4	35.7	39.5	39.6	39.8	40.2	39.2	33.8	88.0	152.3	256.2	281.9
			230VAC	34.6	36.7	36.7	36.8	37.0	35.5	39.2	39.4	39.5	39.8	38.9	33.5	87.1	150.4	251.1	276.7
C9200 CX-12P-2XGH	315W HVDC/AC	Fixed	277VAC	34.6	36.7	36.8	36.9	37.0	35.3	39.1	39.3	39.4	39.7	38.7	33.4	92.3	155.1	255.9	281.4
			380VDC	34.5	36.5	36.5	36.6	36.8	35.2	38.9	39.0	39.2	39.6	38.6	33.3	92.7	155.0	256.5	281.8
C9200 CX-12T-2X2G	80W AC	Fixed	115VAC	20.0	21.9	22.0	22.1	22.3	21.1	25.1	25.3	25.4	25.9	24.7	18.7	no PoE	no PoE	no PoE	no PoE
			230VAC	20.1	22.0	22.1	22.2	22.4	21.1	25.1	25.3	25.4	25.9	24.8	18.8	no PoE	no PoE	no PoE	no PoE
C9200 CX-8UXG-2X	315W AC	Fixed	115VAC	43.4	45.1	45.3	45.3	45.5	46.7	50.3	50.5	50.6	50.9	50.0	40.1	105.5	170.5	275.7	301.9
			230VAC	43.1	44.7	44.8	44.9	45.0	46.5	49.9	50.1	50.2	50.5	49.6	39.9	103.5	166.8	268.7	293.9
C9200 CX-8UXG-2XH	315W HVDC/AC	Fixed	277VAC	43.2	45.0	45.0	45.1	45.3	46.4	50.4	50.5	50.7	51.0	50.0	40.1	103.1	166.1	267.4	292.3
			380VDC	43.1	44.9	44.9	45.0	45.1	46.5	50.0	50.1	50.3	50.5	49.7	39.6	103.7	166.4	267.3	292.2

\* C9200CX HVDC models can also operate at 115V or 230V AC, the power consumption is the same as the corresponding AC models.

# Safety and compliance

Table 21 lists the safety and compliance information for Cisco Catalyst 9200 Series switches.

**Table 21.** Safety and compliance information

Description	Specification
Safety certifications	<ul style="list-style-type: none"><li>• IEC 60950-1/62368-1</li><li>• UL 60950-1/62368-1</li><li>• CAN/CSA C22.2 No. 60950-1/62368-1</li><li>• EN 60950-1/62368-1</li><li>• AS/NZS 60950.1, AS/NZS 62368.1</li><li>• Class I Equipment</li></ul>
Electromagnetic compatibility certifications	<ul style="list-style-type: none"><li>• 47 CFR Part 15</li><li>• CISPR 32 Class A</li><li>• CNS 13438</li><li>• EN 300 386*</li><li>• EN 55032 Class A</li><li>• EN61000-3-2</li><li>• EN61000-3-3</li><li>• ICES-003 Class A</li><li>• KN 32</li><li>• TCVN 7189 Class A</li><li>• V-3 Class A</li><li>• CISPR 35</li><li>• EN 300 386*</li><li>• EN 55035</li><li>• KN 35</li><li>• TCVN 7317</li></ul>
Environmental	Reduction of Hazardous Substances (ROHS) 5

\*Use shielded cables for locations other than telecom centers

## Ordering

### Ordering information

Table 22 lists ordering information for Cisco Catalyst 9200 Series switches. To place an order, visit the Cisco Ordering home page at:

[https://www.cisco.com/en/US/ordering/or13/or8/order\\_customer\\_help\\_how\\_to\\_order\\_listing.html](https://www.cisco.com/en/US/ordering/or13/or8/order_customer_help_how_to_order_listing.html).

### Switch Models

#### C9200 models

**Table 22.** C9200 Models Ordering information

Product number	Product description
<b>C9200-24T-A</b>	Catalyst 9200 24-port Data Switch, Network Advantage
<b>C9200-24T-E</b>	Catalyst 9200 24-port Data Switch, Network Essentials
<b>C9200-24P-A</b>	Catalyst 9200 24-port PoE+ Switch, Network Advantage
<b>C9200-24P-E</b>	Catalyst 9200 24-port PoE+ Switch, Network Essentials
<b>C9200-24PB-A</b>	Catalyst 9200 24-port PoE+, enhanced VRF, Network Advantage
<b>C9200-24PXG-E</b>	Catalyst 9200 24-port 8xmGig, 16x1G, PoE+, Network Essentials
<b>C9200-24PXG-A</b>	Catalyst 9200 24-port 8xmGig, 16x1G, PoE+, Network Advantage
<b>C9200-48T-A</b>	Catalyst 9200 48-port Data Switch, Network Advantage
<b>C9200-48T-E</b>	Catalyst 9200 48-port Data Switch, Network Essentials
<b>C9200-48P-A</b>	Catalyst 9200 48-port PoE+ Switch, Network Advantage
<b>C9200-48P-E</b>	Catalyst 9200 48-port PoE+ Switch, Network Essentials
<b>C9200-48PL-A</b>	Catalyst 9200 48-Port partial PoE+ Switch, Network Advantage
<b>C9200-48PL-E</b>	Catalyst 9200 48-Port partial PoE+ Switch, Network Essentials
<b>C9200-48PB-A</b>	Catalyst 9200 48-port PoE+, enhanced VRF, Network Advantage
<b>C9200-48PXG-E</b>	Catalyst 9200 48-port 8xmGig, 40x1G, PoE+, Network Essentials
<b>C9200-48PXG-A</b>	Catalyst 9200 48-port 8xmGig, 40x1G, PoE+, Network Advantage

## Network modules

**Table 23.** C9200 Models Ordering information – network modules

Modular uplink network modules for C9200 Models	
Product number	Product description
<b>C9200-NM-2Y (=)</b>	Catalyst 9200 2 x 25 GE Network Module, spare
<b>C9200-NM-2Q (=)</b>	Catalyst 9200 2 x 40GE Network Module, spare
<b>C9200-NM-4G (=)</b>	Catalyst 9200 4 x 1GE Network Module, spare
<b>C9200-NM-4X (=)</b>	Catalyst 9200 4 x 10GE Network Module, spare
<b>C9200-NM-BLANK (=)</b>	Catalyst 9200 BLANK Network Module, spare

## C9200L models

**Table 24.** C9200L Models Ordering information

Product number	Product description
C9200L-24T-4G-A	Catalyst 9200L 24-port Data 4x1G uplink Switch, Network Advantage
C9200L-24T-4G-E	Catalyst 9200L 24-port Data 4x1G uplink Switch, Network Essentials
C9200L-24P-4G-A	Catalyst 9200L 24-port PoE+ 4x1G uplink Switch, Network Advantage
C9200L-24P-4G-E	Catalyst 9200L 24-port PoE+ 4x1G uplink Switch, Network Essentials
C9200L-48T-4G-A	Catalyst 9200L 48-port Data 4x1G uplink Switch, Network Advantage
C9200L-48T-4G-E	Catalyst 9200L 48-port Data 4x1G uplink Switch, Network Essentials
C9200L-48P-4G-A	Catalyst 9200L 48-port PoE+ 4x1G uplink Switch, Network Advantage
C9200L-48P-4G-E	Catalyst 9200L 48-port PoE+ 4x1G uplink Switch, Network Essentials
C9200L-48PL-4G-A	Catalyst 9200L 48-port partial PoE+ 4x1G uplink Switch, Network Advantage
C9200L-48PL-4G-E	Catalyst 9200L 48-port partial PoE+ 4x1G uplink Switch, Network Essentials
C9200L-24T-4X-A	Catalyst 9200L 24-port Data 4x10G uplink Switch, Network Advantage
C9200L-24T-4X-E	Catalyst 9200L 24-port Data 4x10G uplink Switch, Network Essentials
C9200L-24P-4X-A	Catalyst 9200L 24-port PoE+ 4x10G uplink Switch, Network Advantage
C9200L-24P-4X-E	Catalyst 9200L 24-port PoE+ 4x10G uplink Switch, Network Essentials
C9200L-48T-4X-A	Catalyst 9200L 48-port Data 4x10G uplink Switch, Network Advantage
C9200L-48T-4X-E	Catalyst 9200L 48-port Data 4x10G uplink Switch, Network Essentials



Product number	Product description
C9200L-48P-4X-A	Catalyst 9200L 48-port PoE+ 4x10G uplink Switch, Network Advantage
C9200L-48P-4X-E	Catalyst 9200L 48-port PoE+ 4x10G uplink Switch, Network Essentials
C9200L-48PL-4X-A	Catalyst 9200L 48-port partial PoE+ 4x10G uplink Switch, Network Advantage
C9200L-48PL-4X-E	Catalyst 9200L 48-port partial PoE+ 4x10G uplink Switch, Network Essentials
C9200L-24PXG-4X-E	Catalyst 9200L 24-port 8xmGig, 16x1G, 4x10G, PoE+, Network Essentials
C9200L-24PXG-4X-A	Catalyst 9200L 24-port 8xmGig, 16x1G, 4x10G, PoE+, Network Advantage
C9200L-48PXG-4X-E	Catalyst 9200L 48-port 12xmGig, 36x1G, 4x10G PoE+, Network Essentials
C9200L-48PXG-4X-A	Catalyst 9200L 48-port 12xmGig, 36x1G, 4x10G PoE+, Network Advantage
C9200L-24PXG-2Y-E	Catalyst 9200L 24-port 8xmGig, 16x1G, 2x25G, PoE+, Network Essentials
C9200L-24PXG-2Y-A	Catalyst 9200L 24-port 8xmGig, 16x1G, 2x25G, PoE+, Network Advantage
C9200L-48PXG-2Y-E	Catalyst 9200L 48-port 8xmGig, 40x1G, 2x25G PoE+, Network Essentials
C9200L-48PXG-2Y-A	Catalyst 9200L 48-port 8xmGig, 40x1G, 2x25G PoE+, Network Advantage

## C9200CX models

**Table 25.** C9200CX Models Ordering information

Product number	Product description
<b>C9200CX-12T-2X2G-E</b>	Catalyst 9200CX 12-port 1G, 2x10G and 3x1G, data, Network Essentials
<b>C9200CX-12T-2X2G-A</b>	Catalyst 9200CX 12-port 1G, 2x10G and 3x1G, data, Network Advantage
<b>C9200CX-12P-2X2G-E</b>	Catalyst 9200CX 12-port 1G, 2x10G and 2x1G, PoE+, Network Essentials
<b>C9200CX-12P-2X2G-A</b>	Catalyst 9200CX 12-port 1G, 2x10G and 2x1G, PoE+, Network Advantage
<b>C9200CX-8P-2X2G-E</b>	Catalyst 9200CX 8-port 1G, 2x10G and 2x1G, PoE+, Network Essentials
<b>C9200CX-8P-2X2G-A</b>	Catalyst 9200CX 8-port 1G, 2x10G and 2x1G, PoE+, Network Advantage
<b>C9200CX-8UXG-2X-E</b>	Catalyst 9200CX 4-port mGig and 4-port 1G, 2x10G, UPOE, Network Essentials
<b>C9200CX-8UXG-2X-A</b>	Catalyst 9200CX 4-port mGig and 4-port 1G, 2x10G, UPOE, Network Advantage
<b>C9200CX-12P-2XGH-E</b>	Catalyst 9200CX 12-port 1G, 2x10G and 2x1G, PoE+, HVDC, Network Essentials
<b>C9200CX-12P-2XGH-A</b>	Catalyst 9200CX 12-port 1G, 2x10G and 2x1G, PoE+, HVDC, Network Advantage
<b>C9200CX-8P-2XGH-E</b>	Catalyst 9200CX 8-port 1G, 2x10G and 2x1G, PoE+, HVDC, Network Essentials
<b>C9200CX-8P-2XGH-A</b>	Catalyst 9200CX 8-port 1G, 2x10G and 2x1G, PoE+, HVDC, Network Advantage

Product number	Product description
<b>C9200CX-8UXG-2XH-E</b>	Catalyst 9200CX 4-port mGig and 4-port 1G, 2x10G, UPOE, HVDC, Network Essentials
<b>C9200CX-8UXG-2XH-A</b>	Catalyst 9200CX 4-port mGig and 4-port 1G, 2x10G, UPOE, HVDC, Network Advantage

## Software licenses

### C9200 software licenses

**Table 26.** C9200 Models Ordering information – software licenses

C9200 Cisco DNA software licenses	
Product number	Product description
<b>C9200-DNA-E-24</b>	C9200 Cisco DNA Essentials Term 24-port
<b>C9200-DNA-E-24-3Y</b>	C9200 Cisco DNA Essentials, 24-port, 3 Year Term license
<b>C9200-DNA-E-24-5Y</b>	C9200 Cisco DNA Essentials, 24-port, 5 Year Term license
<b>C9200-DNA-E-24-7Y</b>	C9200 Cisco DNA Essentials, 24-port, 7 Year Term license
<b>C9200-DNA-E-48</b>	C9200 Cisco DNA Essentials Term 48-port
<b>C9200-DNA-E-48-3Y</b>	C9200 Cisco DNA Essentials, 48-port, 3 Year Term license
<b>C9200-DNA-E-48-5Y</b>	C9200 Cisco DNA Essentials, 48-port, 5 Year Term license
<b>C9200-DNA-E-48-7Y</b>	C9200 Cisco DNA Essentials, 48-port, 7 Year Term license
<b>C9200-DNA-A-24</b>	C9200 Cisco DNA Advantage Term 24-port
<b>C9200-DNA-A-24-3Y</b>	C9200 Cisco DNA Advantage, 24-port, 3 Year Term license
<b>C9200-DNA-A-24-5Y</b>	C9200 Cisco DNA Advantage, 24-port, 5 Year Term license
<b>C9200-DNA-A-24-7Y</b>	C9200 Cisco DNA Advantage, 24-port, 7 Year Term license
<b>C9200-DNA-A-48</b>	C9200 Cisco DNA Advantage Term 48-port
<b>C9200-DNA-A-48-3Y</b>	C9200 Cisco DNA Advantage, 48-port, 3 Year Term license
<b>C9200-DNA-A-48-5Y</b>	C9200 Cisco DNA Advantage, 48-port, 5 Year Term license
<b>C9200-DNA-A-48-7Y</b>	C9200 Cisco DNA Advantage, 48-port, 7 Year Term license
<b>C9200-LIC=</b>	Electronic Cisco DNA Upgrade License for C9200 switches. Note: when upgrading from Cisco DNA Essentials to Cisco DNA Advantage, Network Essentials is upgraded to Network Advantage
<b>C9200-24-E-A</b>	C9200 24-port NW and Cisco DNA Essentials to NW and Cisco DNA Advantage Upgrade
<b>C9200-24-E-A-3</b>	24-port NW and Cisco DNA Ess to NW and Cisco DNA Adv Upgrade License 3Y

C9200 Cisco DNA software licenses	
Product number	Product description
C9200-24-E-A-5	24-port NW and Cisco DNA Ess to NW and Cisco DNA Adv Upgrade License 5Y
C9200-24-E-A-7	24-port NW and Cisco DNA Ess to NW and Cisco DNA Adv Upgrade License 7Y
C9200-48-E-A	C9200 48-port NW and Cisco DNA Essentials to NW and Cisco DNA Advantage Upgrade
C9200-48-E-A-3	48-port NW and Cisco DNA Ess to NW and Cisco DNA Adv Upgrade License 3Y
C9200-48-E-A-5	48-port NW and Cisco DNA Ess to NW and Cisco DNA Adv Upgrade License 5Y
C9200-48-E-A-7	48-port NW and Cisco DNA Ess to NW and Cisco DNA Adv Upgrade License 7Y

C9200 Cisco Catalyst software licenses	
Product number	Product description
C9200-DNX-E-24-3Y	C9200 Cisco Catalyst Essentials, 24-port, 3 Year Term license
C9200-DNX-E-24-5Y	C9200 Cisco Catalyst Essentials, 24-port, 5 Year Term license
C9200-DNX-E-24-7Y	C9200 Cisco Catalyst Essentials, 24-port, 7 Year Term license
C9200-DNX-E-48-3Y	C9200 Cisco Catalyst Essentials, 48-port, 3 Year Term license
C9200-DNX-E-48-5Y	C9200 Cisco Catalyst Essentials, 48-port, 5 Year Term license
C9200-DNX-E-48-7Y	C9200 Cisco Catalyst Essentials, 48-port, 7 Year Term license
C9200-DNX-A-24-3Y	C9200 Cisco Catalyst Advantage, 24-port, 3 Year Term license
C9200-DNX-A-24-5Y	C9200 Cisco Catalyst Advantage, 24-port, 5 Year Term license
C9200-DNX-A-24-7Y	C9200 Cisco Catalyst Advantage, 24-port, 7 Year Term license
C9200-DNX-A-48-3Y	C9200 Cisco Catalyst Advantage, 48-port, 3 Year Term license
C9200-DNX-A-48-5Y	C9200 Cisco Catalyst Advantage, 48-port, 5 Year Term license
C9200-DNX-A-48-7Y	C9200 Cisco Catalyst Advantage, 48-port, 7 Year Term license

## C9200L software licenses

**Table 27.** C9200L Models Ordering information – software licenses

C9200L Cisco DNA software licenses	
Product Number	Product Description
C9200L-DNA-E-24	C9200L Cisco DNA Essentials Term 24-port

## C9200L Cisco DNA software licenses

Product Number	Product Description
<b>C9200L-DNA-E-24-3Y</b>	C9200L Cisco DNA Essentials, 24-port, 3 Year Term license
<b>C9200L-DNA-E-24-5Y</b>	C9200L Cisco DNA Essentials, 24-port, 5 Year Term license
<b>C9200L-DNA-E-24-7Y</b>	C9200L Cisco DNA Essentials, 24-port, 7 Year Term license
<b>C9200L-DNA-E-48</b>	C9200L Cisco DNA Essentials Term 48-port
<b>C9200L-DNA-E-48-3Y</b>	C9200L Cisco DNA Essentials, 48-port, 3 Year Term license
<b>C9200L-DNA-E-48-5Y</b>	C9200L Cisco DNA Essentials, 48-port, 5 Year Term license
<b>C9200L-DNA-E-48-7Y</b>	C9200L Cisco DNA Essentials, 48-port, 7 Year Term license
<b>C9200L-DNA-A-24</b>	C9200L Cisco DNA Advantage Term 24-port
<b>C9200L-DNA-A-24-3Y</b>	C9200L Cisco DNA Advantage, 24-port, 3 Year Term license
<b>C9200L-DNA-A-24-5Y</b>	C9200L Cisco DNA Advantage, 24-port, 5 Year Term license
<b>C9200L-DNA-A-24-7Y</b>	C9200L Cisco DNA Advantage, 24-port, 7 Year Term license
<b>C9200L-DNA-A-48</b>	C9200L Cisco DNA Advantage Term 48-port
<b>C9200L-DNA-A-48-3Y</b>	C9200L Cisco DNA Advantage, 48-port, 3 Year Term license
<b>C9200L-DNA-A-48-5Y</b>	C9200L Cisco DNA Advantage, 48-port, 5 Year Term license
<b>C9200L-DNA-A-48-7Y</b>	C9200L Cisco DNA Advantage, 48-port, 7 Year Term license
<b>C9200L-LIC=</b>	Electronic Cisco DNA Upgrade License for C9200L switches. Note: when upgrading from Cisco DNA Essentials to Cisco DNA Advantage, Network Essentials is upgraded to Network Advantage
<b>C9200L-24-E-A</b>	C9200L 24-port NW and Cisco DNA Essentials to NW and Cisco DNA Advantage Upgrade
<b>C9200L-24-E-A-3</b>	24-port NW and Cisco DNA Ess to NW and Cisco DNA Adv Upgrade License 3Y
<b>C9200L-24-E-A-5</b>	24-port NW and Cisco DNA Ess to NW and Cisco DNA Adv Upgrade License 5Y
<b>C9200L-24-E-A-7</b>	24-port NW and Cisco DNA Ess to NW and Cisco DNA Adv Upgrade License 7Y
<b>C9200L-48-E-A</b>	C9200L 48-port NW and Cisco DNA Essentials to NW and Cisco DNA Advantage Upgrade
<b>C9200L-48-E-A-3</b>	48-port NW and Cisco DNA Ess to NW and Cisco DNA Adv Upgrade License 3Y
<b>C9200L-48-E-A-5</b>	48-port NW and Cisco DNA Ess to NW and Cisco DNA Adv Upgrade License 5Y
<b>C9200L-48-E-A-7</b>	48-port NW and Cisco DNA Ess to NW and DNA Adv Upgrade License 7Y

## C9200L Cisco Catalyst software licenses

Product number	Product description
C9200L-DNX-E-24-3Y	C9200L Cisco Catalyst Essentials, 24-port, 3 Year Term license
C9200L-DNX-E-24-5Y	C9200L Cisco Catalyst Essentials, 24-port, 5 Year Term license
C9200L-DNX-E-24-7Y	C9200L Cisco Catalyst Essentials, 24-port, 7 Year Term license
C9200L-DNX-E-48-3Y	C9200L Cisco Catalyst Essentials, 48-port, 3 Year Term license
C9200L-DNX-E-48-5Y	C9200L Cisco Catalyst Essentials, 48-port, 5 Year Term license
C9200L-DNX-E-48-7Y	C9200L Cisco Catalyst Essentials, 48-port, 7 Year Term license
C9200L-DNX-A-24-3Y	C9200L Cisco Catalyst Advantage, 24-port, 3 Year Term license
C9200L-DNX-A-24-5Y	C9200L Cisco Catalyst Advantage, 24-port, 5 Year Term license
C9200L-DNX-A-24-7Y	C9200L Cisco Catalyst Advantage, 24-port, 7 Year Term license
C9200L-DNX-A-48-3Y	C9200L Cisco Catalyst Advantage, 48-port, 3 Year Term license
C9200L-DNX-A-48-5Y	C9200L Cisco Catalyst Advantage, 48-port, 5 Year Term license
C9200L-DNX-A-48-7Y	C9200L Cisco Catalyst Advantage, 48-port, 7 Year Term license

## C9200CX software licenses

**Table 28.** C9200CX Models Ordering information – software licenses

C9200CX Cisco DNA software licenses	
Product Number	Product Description
C9200CX-DNA-E-8	C9200CX Cisco DNA Essentials Term 8-port
C9200CX-DNAE-8-3Y	C9200CX Cisco DNA Essentials, 8-port, 3 Year Term license
C9200CX-DNAE-8-5Y	C9200CX Cisco DNA Essentials, 8-port, 5 Year Term license
C9200CX-DNAE-8-7Y	C9200CX Cisco DNA Essentials, 8-port, 7 Year Term license
C9200CX-DNA-A-8	C9200CX Cisco DNA Advantage Term 8-port
C9200CX-DNAA-8-3Y	C9200CX Cisco DNA Advantage, 8-port, 3 Year Term license
C9200CX-DNAA-8-5Y	C9200CX Cisco DNA Advantage, 8-port, 5 Year Term license
C9200CX-DNAA-8-7Y	C9200CX Cisco DNA Advantage, 8-port, 7 Year Term license
C9200CX-DNA-E-12	C9200CX Cisco DNA Essentials Term 12-port
C9200CX-DNAE-12-3Y	C9200CX Cisco DNA Essentials, 12-port, 3 Year Term license

C9200CX Cisco DNA software licenses	
Product Number	Product Description
<b>C9200CX-DNAE-12-5Y</b>	C9200CX Cisco DNA Essentials, 12-port, 5 Year Term license
<b>C9200CX-DNAE-12-7Y</b>	C9200CX Cisco DNA Essentials, 12-port, 7 Year Term license
<b>C9200CX-DNA-A-12</b>	C9200CX Cisco DNA Advantage Term 12-port
<b>C9200CX-DNAA-12-3Y</b>	C9200CX Cisco DNA Advantage, 12-port, 3 Year Term license
<b>C9200CX-DNAA-12-5Y</b>	C9200CX Cisco DNA Advantage, 12-port, 5 Year Term license
<b>C9200CX-DNAA-12-7Y</b>	C9200CX Cisco DNA Advantage, 12-port, 7 Year Term license
<b>C9200CX-LIC=</b>	Electronic Cisco DNA Upgrade License for C9200CX switches. Note: when upgrading from Cisco DNA Essentials to Cisco DNA Advantage, Network Essentials is upgraded to Network Advantage
<b>C9200CX-8-E-A</b>	C9200CX 8-port NW and Cisco DNA Essentials to NW and Cisco DNA Advantage Upgrade
<b>C9200CX-8-E-A-3</b>	C9200CX 8-port NW and Cisco DNA Ess to NW and Cisco DNA Adv Upgrade License 3Y
<b>C9200CX-8-E-A-5</b>	C9200CX 8-port NW and Cisco DNA Ess to NW and Cisco DNA Adv Upgrade License 5Y
<b>C9200CX-8-E-A-7</b>	C9200CX 8-port NW and Cisco DNA Ess to NW and DNA Adv Upgrade License 7Y
<b>C9200CX-12-E-A</b>	C9200CX 12-port NW and Cisco DNA Essentials to NW and Cisco DNA Advantage Upgrade
<b>C9200CX-12-E-A-3</b>	C9200CX 12-port NW and Cisco DNA Ess to NW and Cisco DNA Adv Upgrade License 3Y
<b>C9200CX-12-E-A-5</b>	C9200CX 12-port NW and Cisco DNA Ess to NW and Cisco DNA Adv Upgrade License 5Y
<b>C9200CX-12-E-A-7</b>	C9200CX 12-port NW and Cisco DNA Ess to NW and Cisco DNA Adv Upgrade License 7Y

C9200CX Cisco Catalyst software licenses	
Product Number	Product Description
<b>C9200CX-DNXE-12-3Y</b>	C9200CX Cisco Catalyst Essentials software subscription, 12P, 3 Yr Lic
<b>C9200CX-DNXE-12-5Y</b>	C9200CX Cisco Catalyst Essentials software subscription, 12P, 5 Yr Lic
<b>C9200CX-DNXE-12-7Y</b>	C9200CX Cisco Catalyst Essentials software subscription, 12P, 7 Yr Lic
<b>C9200CX-DNXE-8-3Y</b>	C9200CX Cisco Catalyst Essentials software subscription, 8P, 3 Yr Lic
<b>C9200CX-DNXE-8-5Y</b>	C9200CX Cisco Catalyst Essentials software subscription, 8P, 5 Yr Lic

## C9200CX Cisco Catalyst software licenses

Product Number	Product Description
C9200CX-DNxE-8-7Y	C9200CX Cisco Catalyst Essentials software subscription, 8P, 7 Yr Lic
C9200CX-DNXA-12-3Y	C9200CX Cisco Catalyst Advantage software subscription, 12P, 3 Yr Lic
C9200CX-DNXA-12-5Y	C9200CX Cisco Catalyst Advantage software subscription, 12P, 5 Yr Lic
C9200CX-DNXA-12-7Y	C9200CX Cisco Catalyst Advantage software subscription, 12P, 7 Yr Lic
C9200CX-DNXA-8-3Y	C9200CX Cisco Catalyst Advantage software subscription, 8P, 3 Yr Lic
C9200CX-DNXA-8-5Y	C9200CX Cisco Catalyst Advantage software subscription, 8P, 5 Yr Lic
C9200CX-DNXA-8-7Y	C9200CX Cisco Catalyst Advantage software subscription, 8P, 7 Yr Lic

## Stacking Cables

**Table 29.** StackWise Cable Ordering information

StackWise-80 and StackWise-160 Kit and cables	
Product number	Product description
C9200-STACK-KIT=	C9200 Stack Kit Spare
C9200L-STACK-KIT=	C9200L Stack Kit Spare
STACK-T4-50CM	50CM Type 3 Stacking Cable
STACK-T4-50CM=	50CM Type 3 Stacking Cable, spare
STACK-T4-1M	1M Type 3 Stacking Cable
STACK-T4-1M=	1M Type 3 Stacking Cable, spare
STACK-T4-3M	3M Type 3 Stacking Cable
STACK-T4-3M=	3M Type 3 Stacking Cable, spare

## Power supplies

**Table 30.** Power Supply Ordering information

Power supplies	
Product Number	Product Description
<b>PWR-C5-125WAC (=)</b>	125W AC Config 5 Power Supply
<b>PWR-C5-125WAC/2</b>	125W AC Config 5 Power Supply - Secondary Power Supply
<b>PWR-C5-600WAC (=)</b>	600W AC Config 5 Power Supply
<b>PWR-C5-600WAC/2</b>	600W AC Config 5 Power Supply - Secondary Power Supply
<b>PWR-C5-1KWAC (=)</b>	1KW AC Config 5 Power Supply
<b>PWR-C5-1KWAC/2</b>	1KW AC Config 5 Power Supply - Secondary Power Supply
<b>PWR-C5-715WDC=</b>	715W DC Config 5 Power Supply
<b>PWR-C6-125WAC (=)</b>	125W AC Config 6 Power Supply
<b>PWR-C6-125WAC/2</b>	125W AC Config 6 Power Supply - Secondary Power Supply
<b>PWR-C6-600WAC (=)</b>	600W AC Config 6 Power Supply
<b>PWR-C6-600WAC/2</b>	600W AC Config 6 Power Supply - Secondary Power Supply
<b>PWR-C6-1KWAC (=)</b>	1KW AC Config 6 Power Supply
<b>PWR-C6-1KWAC/2</b>	1KW AC Config 6 Power Supply - Secondary Power Supply
<b>PWR-C6-715WDC=</b>	715W DC Config 6 Power Supply
<b>PWR-C5-BLANK=</b>	Blank Module
<b>PWR-ADPT</b>	AC-DC power adapter for the C9200CX-12T-2X2G compact switch (80W)
<b>C9K-80W-ADPT</b>	AC-DC slim power adapter for the C9200CX-12T-2X2G compact switch (80W)
<b>C9K-ADPT-DC</b>	DC-DC power adapter for the C9200CX-12T-2X2G compact switch (80W)
<b>C9K-ADPT-BRKT-12T</b>	Power adaptor bracket for C9200CX-12T-2X2G
<b>C9K-CMPCT-PWR-CLP</b>	Power clip for the C9200CX compact switches (not compatible with HVDC SKUs)



**Table 31.** Spare power cords Ordering information

Spare power cords	
Product Number	Product Description
CAB-TA-NA=	AC power cord for Cisco Catalyst (North America)
CAB-TA-AP=	AC power cord for Cisco Catalyst (Australia)
CAB-TA-AR=	AC power cord for Cisco Catalyst (Argentina)
CAB-TA-SW=	AC power cord for Cisco Catalyst (Switzerland)
CAB-TA-UK=	AC power cord for Cisco Catalyst (United Kingdom)
CAB-TA-JP=	AC power cord for Cisco Catalyst (Japan)
CAB-TA-250V-JP=	Japan 250VAC power cord for Cisco Catalyst (Japan)
CAB-TA-125V-JP=	Japan 125V AC Type A Power Cable (Japan – 48 port only)
CAB-TA-EU=	AC power cord for Cisco Catalyst (Europe)
CAB-TA-IT=	AC power cord for Cisco Catalyst (Italy)
CAB-TA-IN=	AC power cord for Cisco Catalyst (India)
CAB-TA-CN=	AC power cord for Cisco Catalyst (China)
CAB-TA-DN=	AC power cord for Cisco Catalyst (Denmark)
CAB-TA-IS=	AC power cord for Cisco Catalyst (Israel)
CAB-ACBZ-12A=	AC power cord for Cisco Catalyst (Brazil), 12A/125V BR-3-20 plug up to 12A
CAB-ACBZ-10A=	AC power cord for Cisco Catalyst (Brazil), 10A/250V BR-3-10 plug up to 10A
CAB-C15-CBN	Cabinet jumper power cord, 250VAC 13A, C14–C15 connectors

\* For 9200CX switch models with internal HVDC power supply, customer or system integrator is responsible for the power cable as HVDC switches are usually installed in DC micro grid with customized cables and connectors. For more information, please consult with your Cisco sales representative.

## Mounting Accessories

**Table 32.** Mounting Accessories Ordering information

Product Number	Product Description
ACC-KIT-T1=	Accessory kit with 19 inch Type 1 rack mount
RACK-KIT-T1=	19, 23, 24 inch and ETSI Type 1 rack mount kit
4PT-KIT-T2=	4 Point rack mount kit New

Product Number	Product Description
<b>REC-KIT-T1=</b>	Recessed 1RU rack mount for 9200L and 9200 switches
<b>C9K-MGNT-TRAY</b>	Magnet and Mounting Tray for compact switches
<b>C9K-CMPCT-DIN-MNT</b>	DIN Rail Mount for compact switches
<b>RACKMNT-19-CMPACT</b>	19-Inch Rack Mounting Brackets for compact switches
<b>C9K-CMPCT-CBLE-GRD</b>	Cable guard for compact switches (for C9K-WALL-TRAY)
<b>C9K-WALL-TRAY</b>	Wall mount bracket for compact switches
<b>C9K-CMPCT-DESK-MNT</b>	Under desk mount for compact switches
<b>C9K-ACC-RBFT</b>	Rubber Feet For Table Top Setup 9200 and 9300
<b>C9K-ACC-SCR-4</b>	12-24 and 10-32 Screws For Rack Installation, Qty 4
<b>CAB-GUIDE-1RU</b>	1RU Cable Management Guides 9200 and 9300

## Warranty

### Cisco enhanced limited lifetime hardware warranty

Cisco Catalyst 9200 Series switches come with a Cisco Enhanced Limited Lifetime Warranty (E-LLW) that includes Next-Business-Day (NBD) delivery of replacement hardware where available and 90 days of 8x5 Cisco Technical Assistance Center (TAC) support.

Your formal warranty statement, including the warranty applicable to Cisco software, appears in the information packet that accompanies your Cisco product. We encourage you to review the warranty statement shipped with your specific product carefully before use.

Cisco reserves the right to refund the purchase price as its exclusive warranty remedy.

For further information about warranty terms, visit <https://www.cisco.com/go/warranty>.

Table 33 provides information about the E-LLW.

**Table 33.** Warranty information

	Cisco E-LLW
<b>Devices covered</b>	Applies to Cisco Catalyst 9200 Series switches.
<b>Warranty duration</b>	As long as the original customer owns the product.
<b>End-of-life policy</b>	In the event of discontinuance of product manufacture, Cisco warranty support is limited to 5 years from the announcement of discontinuance.
<b>Hardware replacement</b>	Cisco or its service center will use commercially reasonable efforts to ship a replacement for NBD delivery, where available. Otherwise, a replacement will be shipped within 10 working days after receipt of the Return Materials Authorization (RMA) request. Actual delivery times might vary depending on customer location.

	Cisco E-LLW
<b>Effective date</b>	Hardware warranty commences from the date of shipment to customer (and in case of resale by a Cisco reseller, not more than 90 days after original shipment by Cisco).
<b>TAC support</b>	Cisco will provide during business hours, 8 hours per day, 5 days per week, basic configuration, diagnosis, and troubleshooting of device-level problems for up to a 90-day period from the date of shipment of the originally purchased Cisco Catalyst 9200 Series product. This support does not include solution or network-level support beyond the specific device under consideration.
<b>Cisco.com access</b>	Warranty allows guest access only to Cisco.com.

## Cisco services for next-generation Cisco Catalyst switches

Achieve infrastructure excellence faster and with less risk. Cisco Catalyst 9000 Switch Services provide expert guidance to help you successfully deploy, manage and support the Cisco Catalyst 9000 switches. With unmatched networking expertise, best practices and innovative tools, we can help you reduce overall upgrade, refresh, and migration costs as you introduce new hardware, software and protocols into the network. Offering a comprehensive lifecycle of services – from implementation, optimization, technical and managed services – Cisco experts help you minimize disruption and achieve operational excellence to extract maximum value from your Cisco Networking cloud ready infrastructure.

[Learn more about Cisco Services for Enterprise Networks.](#)

## Optics online reference

Cisco Catalyst 9200 Series switches support a wide range of optics. Because the list of supported optics is updated on a regular basis, consult the tables available here for the latest SFP+ and SFP compatibility information: <https://tmgmatrix.cisco.com>

## Product sustainability

Refer to the [CSR/Social Responsibility section](#) for more information on Cisco's environmental sustainability policies and initiatives.

### ENERGY STAR Certification

Cisco is driving long term value and market advantage by continuing to embed energy efficiency through hardware, software and by providing customers visibility into their energy consumption to help them baseline, identify trends and anomalies and take corrective actions.

With the ENERGY STAR certification of Catalyst 9200 Series models, Cisco is one of the first networking company to have third party-approved Campus Switches. Ecolabel certifications like ENERGY STAR help customers identify “environmentally preferable” products to help maximize energy efficiency, reduce GHG emissions and lower energy costs.

ENERGY STAR certification reinforces Cisco's ongoing commitment to deliver energy efficient products including top-rated power supplies, active power management and monitoring capabilities, alignment to ISO 14000 Environmental Management systems standards, and all designed with circularity principles in mind.

## Learn more:

ENERGY STAR Certified Product Finder <https://www.energystar.gov/productfinder/product/certified-large-network-equipment/results>

**Table 34.** Sustainability References

Sustainability Topic		Reference
General	Information on product-material-content laws and regulations	<a href="#">Materials</a>
	Information on electronic waste laws and regulations, including our products, batteries, and packaging	<a href="#">WEEE Compliance</a>
	Sustainability Inquiries	Contact: <a href="mailto:csr_inquiries@cisco.com">csr_inquiries@cisco.com</a>
	Safety and compliance	<a href="#">Safety and compliance information</a>
	Information on product takeback and reuse program	<a href="#">Cisco Takeback and Reuse Program</a>
Power	IEEE 802.3at PoE+	<a href="#">Intelligent PoE+ Section</a>
	IEEE 802.3bt / Cisco UPOE	<a href="#">Intelligent PoE+ Section</a>
	IEEE 802.3bt class 6 PD	<a href="#">Intelligent PoE+ Section</a>
	PoE power availability	<a href="#">PoE Power with Primary and secondary power supplies</a>
	High efficiency with HVDC power options	<a href="#">Power supply specifications</a>
	Fan	<a href="#">Fan Section</a>
	Power connectors	<a href="#">Connectors</a>
	Power supply specifications	<a href="#">Power supply specifications</a>
	Power consumption (ATIS)	<a href="#">Power consumption of standalone Catalyst 9200 Series switches</a>
	ENERGY STAR® certified models	<a href="#">ENERGY STAR Certified Large Network Equipment</a>
Material	Product packaging weight and materials	Contact: <a href="mailto:environment@cisco.com">environment@cisco.com</a>
	Chassis Dimension, weight, MTBF	<a href="#">Model dimensions, weight, and mean time between failure metrics</a>
	Elimination of wet paint on plastic bezel	<a href="#">2019 Cisco Corporate Social Responsibility Report</a> , Pg. 19 Stepping up our work on circularity

---

## Cisco Services

### **Accelerate your journey to intent-based networking**

With Cisco Services, you can achieve infrastructure excellence faster with less risk. Our services for Cisco Catalyst 9200 Series switches provide expert guidance to help you successfully plan, deploy, manage, and support your new switches. With unmatched networking expertise, best practices, and innovative tools, Cisco Services can help you reduce overall upgrade, refresh, and migration costs as you introduce new hardware, software, and protocols into the network. With a comprehensive lifecycle of services, Cisco experts will help you minimize disruption and improve operational efficiency to extract maximum value from your Cisco Networking infrastructure. [Learn more](#).

## CSR/Social Responsibility

Information about Cisco's Environmental, Social and Governance (ESG) policies and initiatives can be found in Cisco's [Corporate Social Responsibility](#) (CSR) Report.

## Cisco Capital

### **Flexible payment solutions to help you achieve your objectives**

Cisco Capital makes it easier to get the right technology to achieve your objectives, enable business transformation and help you stay competitive. We can help you reduce the total cost of ownership, conserve capital, and accelerate growth. In more than 100 countries, our flexible payment solutions can help you acquire hardware, software, services and complementary third-party equipment in easy, predictable payments. [Learn more](#).

## Document history

New or revised topic	Described In	Date
<b>Added BGP and PTP support for 9200CX models</b>	Various locations	June 19, 2024
<b>Added Simplified Campus Automation</b>	All relevant sections	June 4, 2024
<b>Added ENERGY Start certification</b>	Various locations	April 12, 2024
<b>Added recessed mounting kit and DC power supply for 9200L and 9200.</b>	Various locations	Jun 26, 2023
<b>Added new Catalyst 9200CX mGig and HVDC SKUs</b>	Various locations	Feb 6, 2023
<b>Added new Catalyst 9200CX models, Cloud Monitoring for Catalyst support</b>	Various locations	June 14, 2022
<b>Added New C9200/L partial PoE Information</b>	Table <a href="#">1</a> , <a href="#">3</a> , <a href="#">7</a> , <a href="#">8</a> , <a href="#">12</a> , <a href="#">17</a> , <a href="#">19</a> , <a href="#">22</a>	September 22, 2020
<b>Added correct images for module uplinks</b>	<a href="#">Network Modules</a>	February 21, 2020
<b>Added New C9200 mGig and C9200 32 VN information</b>	Table <a href="#">1</a> , <a href="#">3</a> , <a href="#">7</a> , <a href="#">8</a> , <a href="#">12</a> , <a href="#">33</a>	January 28, 2020
<b>Added New C9200 Network Modules</b>	Table <a href="#">2</a> , <a href="#">33</a>	January 28, 2020
<b>Added New Power Supply information PWR-C6-600WAC</b>	Table <a href="#">3</a> , <a href="#">16</a> , <a href="#">19</a> , <a href="#">33</a>	October 09, 2019
<b>Forwarding rate with Stacking</b>	<a href="#">Table 8</a>	October 09, 2019
<b>Cloud Security Information</b>	General Information	October 09, 2019
<b>Adding C9200L mGig SKUs</b>	Table <a href="#">1</a> , <a href="#">3</a> , <a href="#">8</a> , <a href="#">12</a> , <a href="#">19</a>	May 14, 2019
<b>Revisions of Weight, addition of LIC upgrade and other minor edits</b>	<a href="#">Software licenses table and weights table</a>	April 01, 2019
<b>Revised Table of Contents Headings</b>	<a href="#">Specifications (was “Dimensions, eight, acoustic, mean time between failures”). added Document History</a>	January 03, 2019

Americas Headquarters  
Cisco Systems, Inc.  
San Jose, CA

Asia Pacific Headquarters  
Cisco Systems (USA) Pte. Ltd.  
Singapore

Europe Headquarters  
Cisco Systems International BV Amsterdam,  
The Netherlands

Cisco has more than 200 offices worldwide. Addresses, phone numbers, and fax numbers are listed on the Cisco Website at <https://www.cisco.com/go/offices>.

Cisco and the Cisco logo are trademarks or registered trademarks of Cisco and/or its affiliates in the U.S. and other countries. To view a list of Cisco trademarks, go to this URL: <https://www.cisco.com/go/trademarks>. Third-party trademarks mentioned are the property of their respective owners. The use of the word partner does not imply a partnership relationship between Cisco and any other company. (1110R)